

Change to Off Site Parking for Staff

New facility opens Wednesday 1st November

What's changing?

- A new 70 space off-site parking facility for staff with parking permits valid for RSCH will be running at Brighton Racecourse from Wednesday 1st November.
- On Monday 6th November the Marina Way Parking facility will be reduced in capacity to 100 parking spaces. It normally accommodates between 140 and 170 vehicles.
- The change is necessary because the overspill parking area at Marina Way Parking will become the vehicle and goods holding centre for Laing O'Rourke, the main contractor on the 3Ts Redevelopment.

How will the Brighton Racecourse service run?

- The Brighton Racecourse parking facility will be available between 7am and 7pm on weekdays. Parking will be on the grass area on the corner of Warren Road and Freshfield Road. Entry to the parking area will be from Warren Road, near to the junction (see image overleaf).
- A minibus service provided by Southern Taxis will run between the Brighton Racecourse facility and the County Hospital. It will operate between the hours of **7am and 9am** in the morning and **3pm and 7pm** in the afternoon. A traffic officer will also be at the site during these times.
- The minibus pick up point at Brighton Racecourse will be at the entrance to the parking area. The minibus pick up point at the hospital will be at Sussex House.
- The minibus will run every 20 minutes during its operating times.

Which parking facility should I use?

- **Please use the Brighton Racecourse facility from Wednesday 1st November if you work regular hours that fall within its opening times of 7am to 7pm.** This will help ensure that there is room at Brighton Marina Parking for staff who work outside these hours and will ease the transition from a single to a dual parking facility.

What if I arrive at one of the facilities and it is full?

- Please drive to the other facility. If both facilities are full it will be necessary to find alternative parking in the area.

Is this a reduction in the parking facilities?

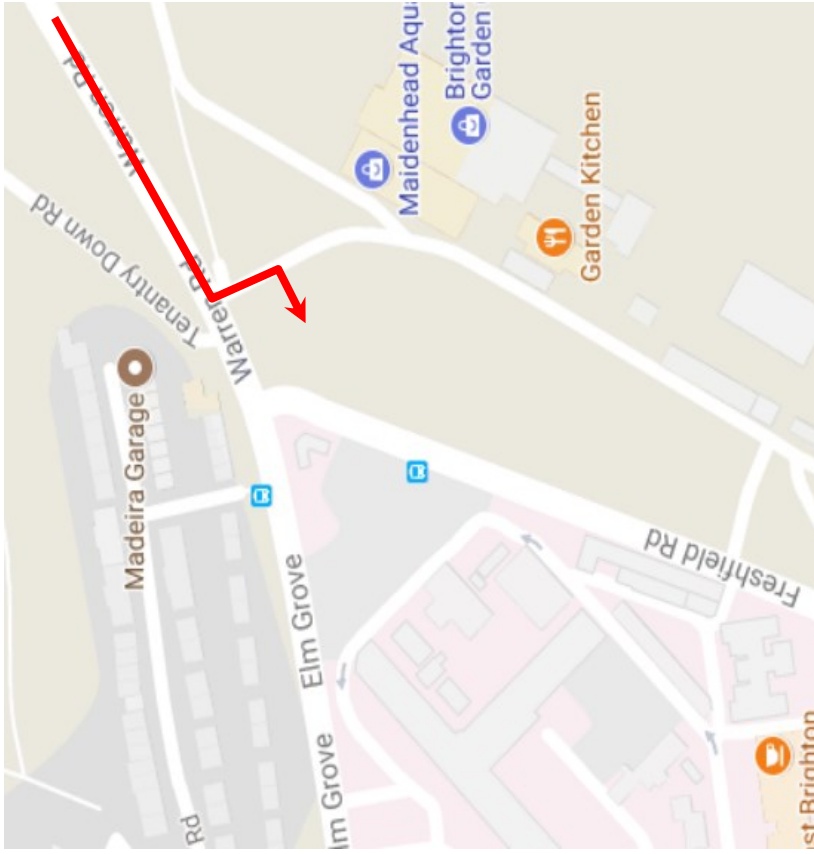
- No, the overspill parking capacity from Marina Way Parking is being re-provided at Brighton Race Course.

Why wasn't there more notice about the change?

- We had been working to find an alternative and should have let people know about the change sooner. Please accept our apologies.

For further information please email: rsch.parking@bsuh.nhs.uk or visit the staff parking page on [the infonet](#)

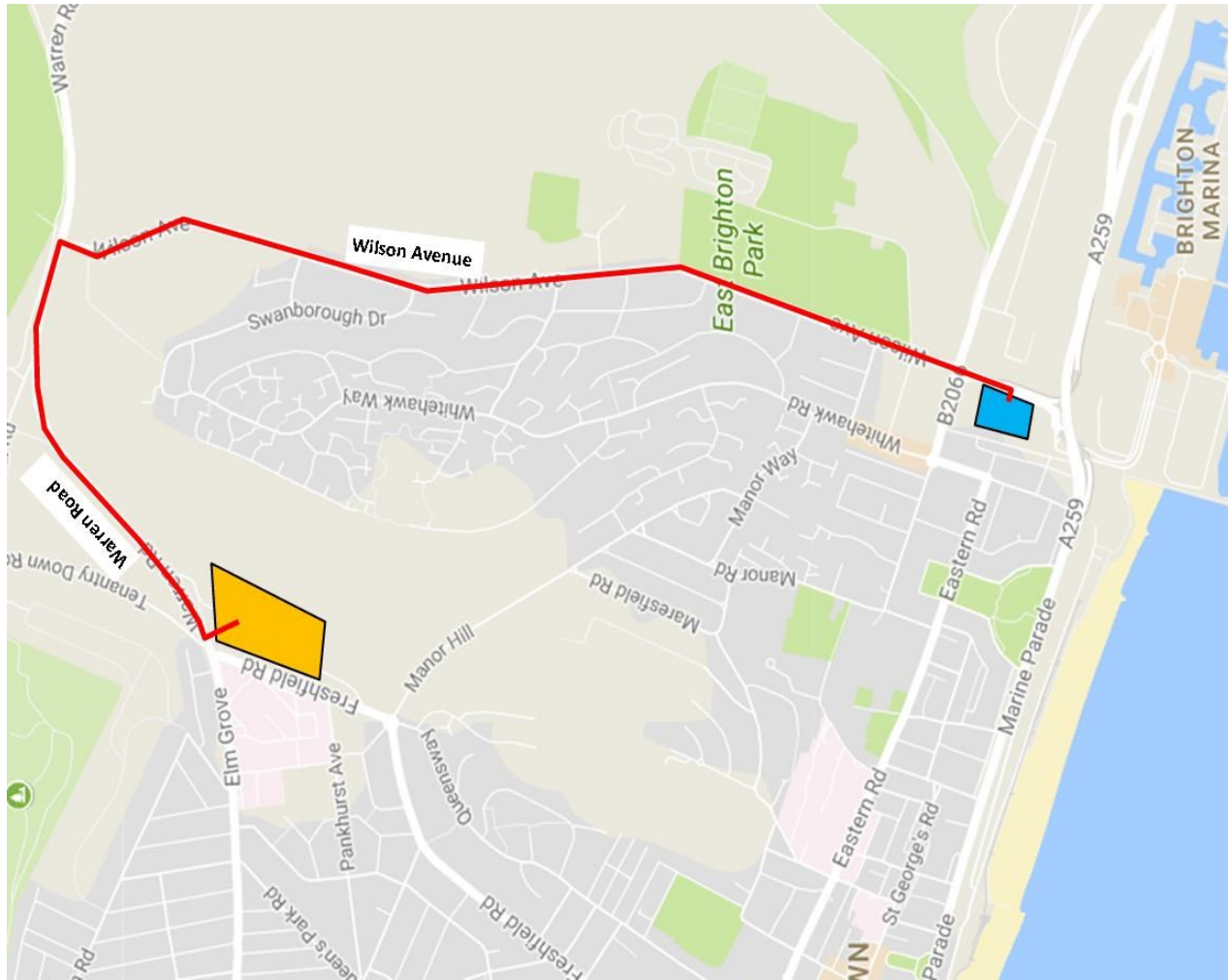
Map showing entry to the Racecourse parking area in more detail.



Entry to the Racecourse parking area seen from Warren Road.



Map showing both off site parking facilities and the suggested route between them



- Marina Way Parking, Boundary Road, Black Rock, Brighton, BN2 5TJ
- Brighton Racecourse, Freshfield Road, Brighton, BN2 9XZ
- Suggested route between the parking facilities.