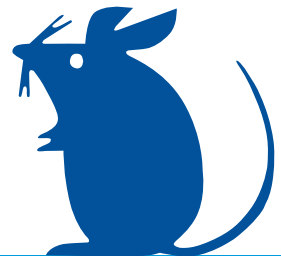


# the alex

Late effects of childhood cancer service



Information for Patients, Families and Carers

## Introduction

The Royal Sussex County Hospital and The Royal Alexandra Children's Hospital provides a Late Effects of Childhood Cancer Service for survivors who had a diagnosis of cancer in childhood (0-19 years) and are now 5 years or more since completion of that treatment.

## What does late effects mean?

The term Late Effects is used to describe any problems you may experience in the future from the treatment you received for cancer as a child.

These may be related to:

- Chemotherapy,
- Radiotherapy,
- Surgery,
- Complications during or after treatment
- Psychological difficulties.

Cancer treatments have an effect on all cells in the body, not just the cancerous cells. Although the damage may occur at the time these treatments are given, the effects may not manifest themselves until many years later.

## What does the service provide?

The service provides expert monitoring, care and support from specialised Doctors and a Clinical Nurse Specialist who have expertise in children's cancer types, treatments and the late effects that may occur. They ensure that appropriate monitoring is undertaken and follow-up is arranged as necessary.

The service can also make sure that any referrals that may need to be made to other specialities are managed appropriately.

## Will I always have to come to clinic?

Some survivors can be seen as infrequently as 5 yearly or be discharged to the care of their General Practitioner (GP) once they are in young adulthood. Others may need to be seen on a 6 monthly or annual basis. This usually depends on the treatments that were given and the effects they may have had on other body systems. It is not uncommon for patients to experience some difficulties coming to terms with the impact of having had a cancer diagnosis in childhood. If you at any time feel you may be experiencing such difficulties then please do get in touch with the team or speak with your GP.

## The multi-disciplinary team

**Dr Anne Davidson** – Consultant Paediatrician and Oncologist (**All clinics**)

**Dr Rosalynnd Johnston** – Consultant Haematologist (**Teenage and Young Adult Haematology Clinics**)

**Dr Anna Crown** – Consultant Endocrinologist (**Teenage and Young Adult Endocrinology Clinics**)

**Dr Mary Taj** – Visiting Consultant from The Royal Marsden Hospital (**Paediatric Clinics**)

**Sophie McGoldrick** – Macmillan Clinical Nurse Specialist for Late Effects (**All clinics**).

## Transition from paediatric to adult services

Transition is the process of transferring from child health care to adult health care. Transition is a gradual process; it gives everyone time to talk about what health care you may need as an adult and to co-ordinate that in a timely manner. Transition within late effects in Brighton will mean having appointments at The Royal Sussex County Hospital instead of The Royal Alexandra Children's Hospital, which is based on the same site. The Paediatric Oncologist and Late Effects Nurse Specialist will still attend appointments in the adult clinics alongside the adult Consultants. Young people are invited to attend the first part of the appointment by themselves to support and encourage them to take control of their own health. Parents/carers are given the opportunity to join later in the appointment.

## Contact information

**The Late Effects Service** Level 9 Oncology, The Royal Alexandra Children's Hospital, Eastern Road, Brighton BN2 5BE

**Telephone:** 01273 696955 Ext. 2431      **Fax:** 01273 523131

**Email:** [Bs-u-tr.lateeffects@nhs.net](mailto:Bs-u-tr.lateeffects@nhs.net)

### Car parking

There is a multi-storey car park located opposite the Royal Alexandra Children's Hospital. A pay machine is located on each floor. Alternatively, there is some roadside parking in the surrounding roads of the hospital. They pay and display or pay by phone parking spaces.

### Bus and train

There are several bus stops that serve this site on Eastern Road. Routes 1, 1A, 7, 14B, 23, 37, 37A, 37B, 40X, 47, 52, 57, 71, 73, 94A, N7 all stop outside the hospital. Bus times can be obtained from Brighton and Hove Bus Company on **01273 886200** or online.

The nearest train station to the hospital is Brighton Station. From outside the station you can catch a bus (see details above) or get a taxi. There is a taxi rank directly outside the front of the station.

### Other useful information

#### After Cure Fact Sheets

[www.cclg.org.uk/our-publications/survivors/after-cure](http://www.cclg.org.uk/our-publications/survivors/after-cure)

**The Olive Tree** Cancer Support for Patients and Families during and beyond treatment [www.olivetreecancersupport.org.uk](http://www.olivetreecancersupport.org.uk)

**Trekstock** Young Adult Cancer Support

[www.trekstock.com/thrivecancersupport](http://www.trekstock.com/thrivecancersupport)

**The Ellen MacArthur Cancer Trust** [www.ellenmacarthurcancertrust.org](http://www.ellenmacarthurcancertrust.org)

© Brighton and Sussex University Hospitals NHS Trust

Disclaimer

The information in this leaflet is for guidance purposes only and is in no way intended to replace professional clinical advice by a qualified practitioner.

Ref number: 775

Publication Date: October 2016    Review Date: October 2018

