

Redeveloping our Emergency Department

£30m for A&E as hospital team moves in

Emergency Department
The new Accident and Emergency department at the hospital has been officially opened by the Mayor of London and the Mayor of the London Borough of Merton. The new department is a major part of the hospital's redevelopment and will provide a modern, efficient and safe environment for patients and staff.



Chief executives determined to win back staff and public confidence
The hospital's chief executives are determined to win back staff and public confidence following the recent closure of the Accident and Emergency department. They have announced a series of measures to improve the department's performance and ensure the highest standards of care for patients.



How the new set-up will work



A&E at the County Hospital

- Only 71% of patients treated within 4 hours – national target is 95%
- Patients waiting in the corridor, with Ambulances queuing outside
- Current space is cramped and in need of refurbishment
- A&E redevelopment is **not** part of the 3Ts development



What is needed?

To improve our services in these 3 areas

- Increased space for patients who need urgent and emergency care, but do not need to be admitted – ‘Ambulatory Care’
- Increased ward space to take ‘short stay’ patients, who need to be admitted but only need to stay for 2 days or less
- Major refurbishment and increased capacity of the Emergency Department itself

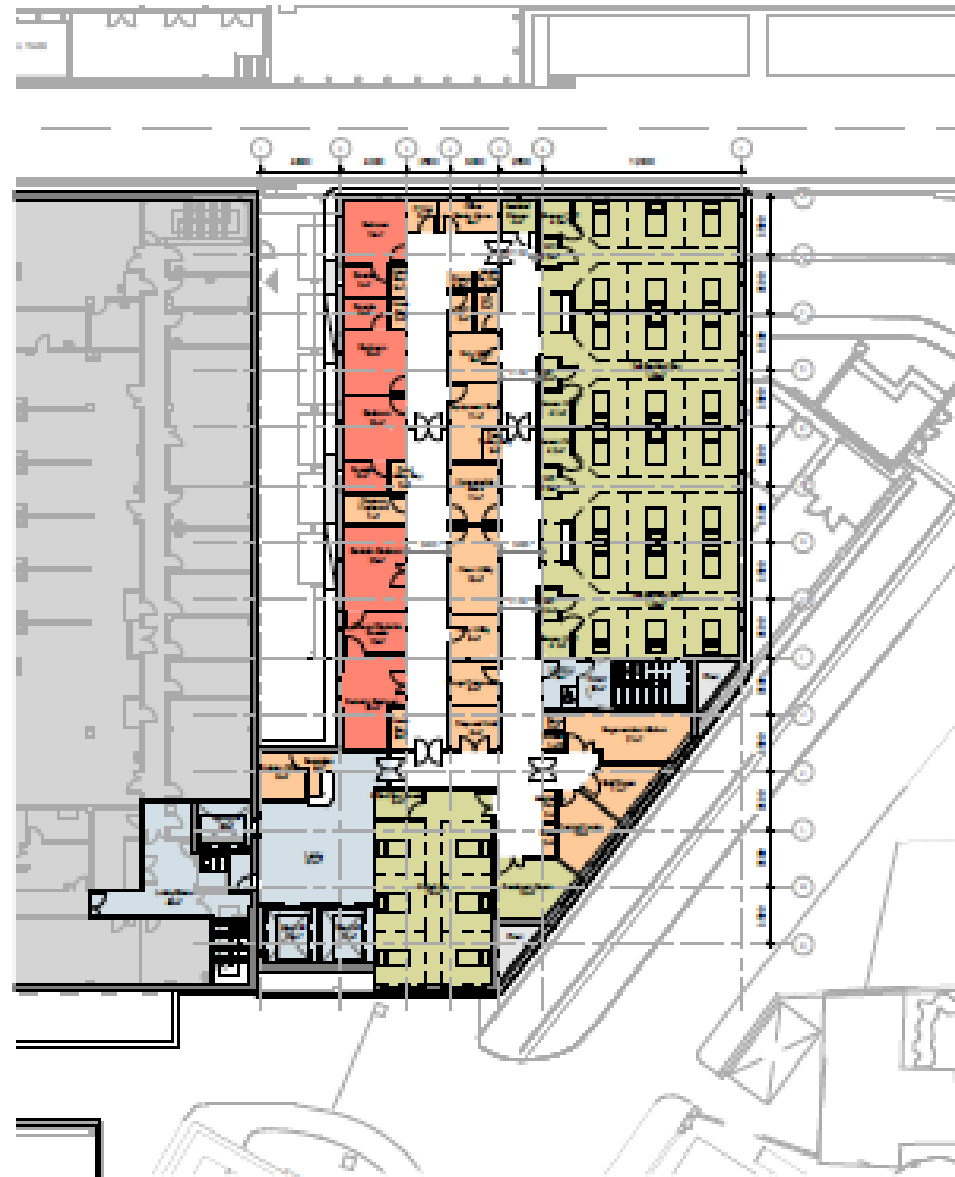


Where have we got to?

- £30m secured (in principle) from the government for the project
- We have submitted a business case asking for this amount & expect to hear back at the end of June
- Reviewed all the options for where we best put the 70 additional beds – the best option is above the A&E drop off area. Ambulances would drive in under the proposed new build

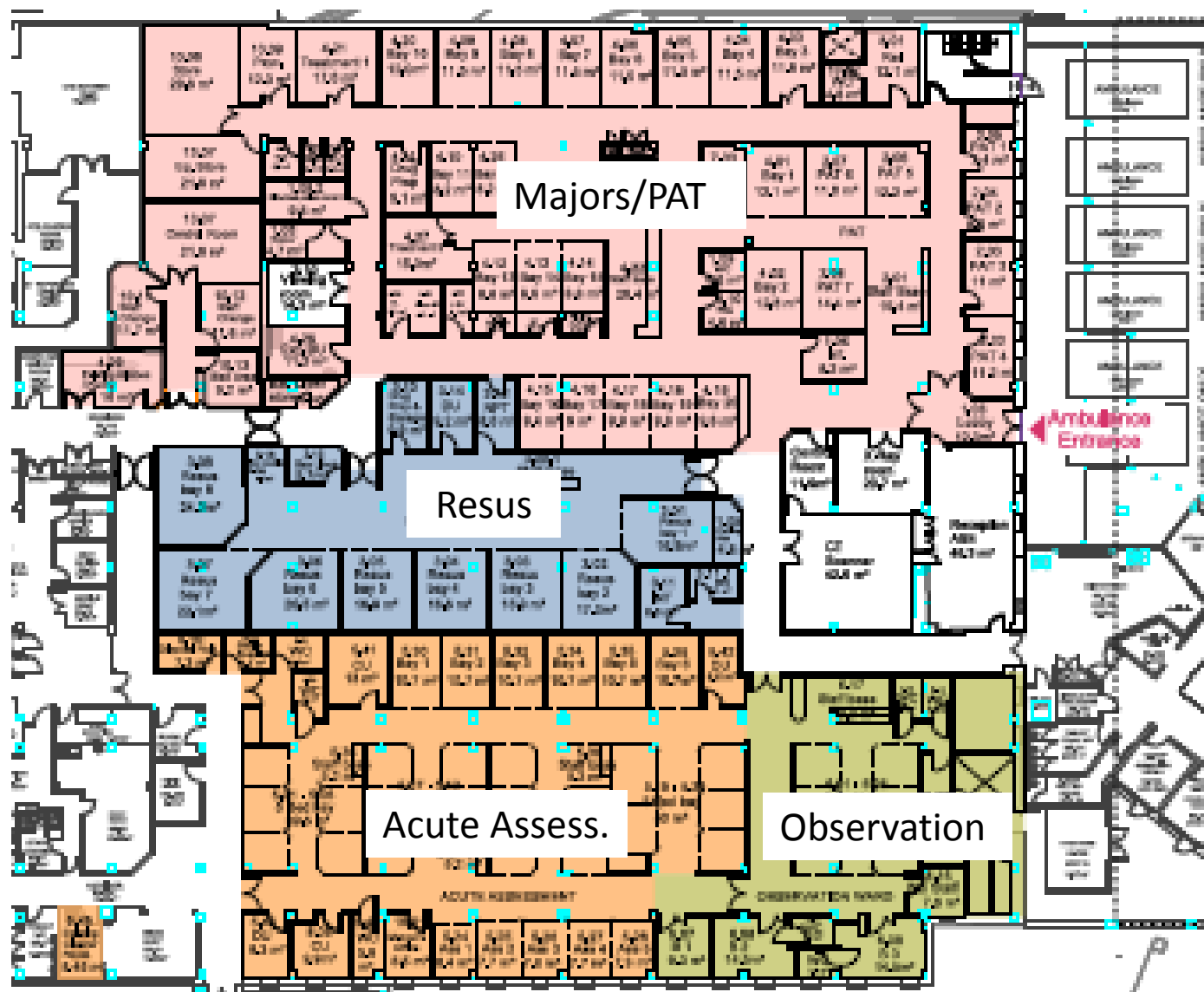


Proposed layout of short stay beds



Level 06 - Proposed First Floor Plan
1 : 200

Proposed Emergency Department layout



What happens next?

- Hoping to have the Business Case approved by the end of June
- Design team now on board and will provide updates to future meetings
- Internal work on Ambulatory Care area to start in August
- External work on the Short Stay beds to start on site in October – and will take approximately 12 months to build
- Refurbishment of Emergency Department complete by March 2019



Questions?

