

# MANAGING MAJOR TRAUMA DURING COVID 19 PANDEMIC

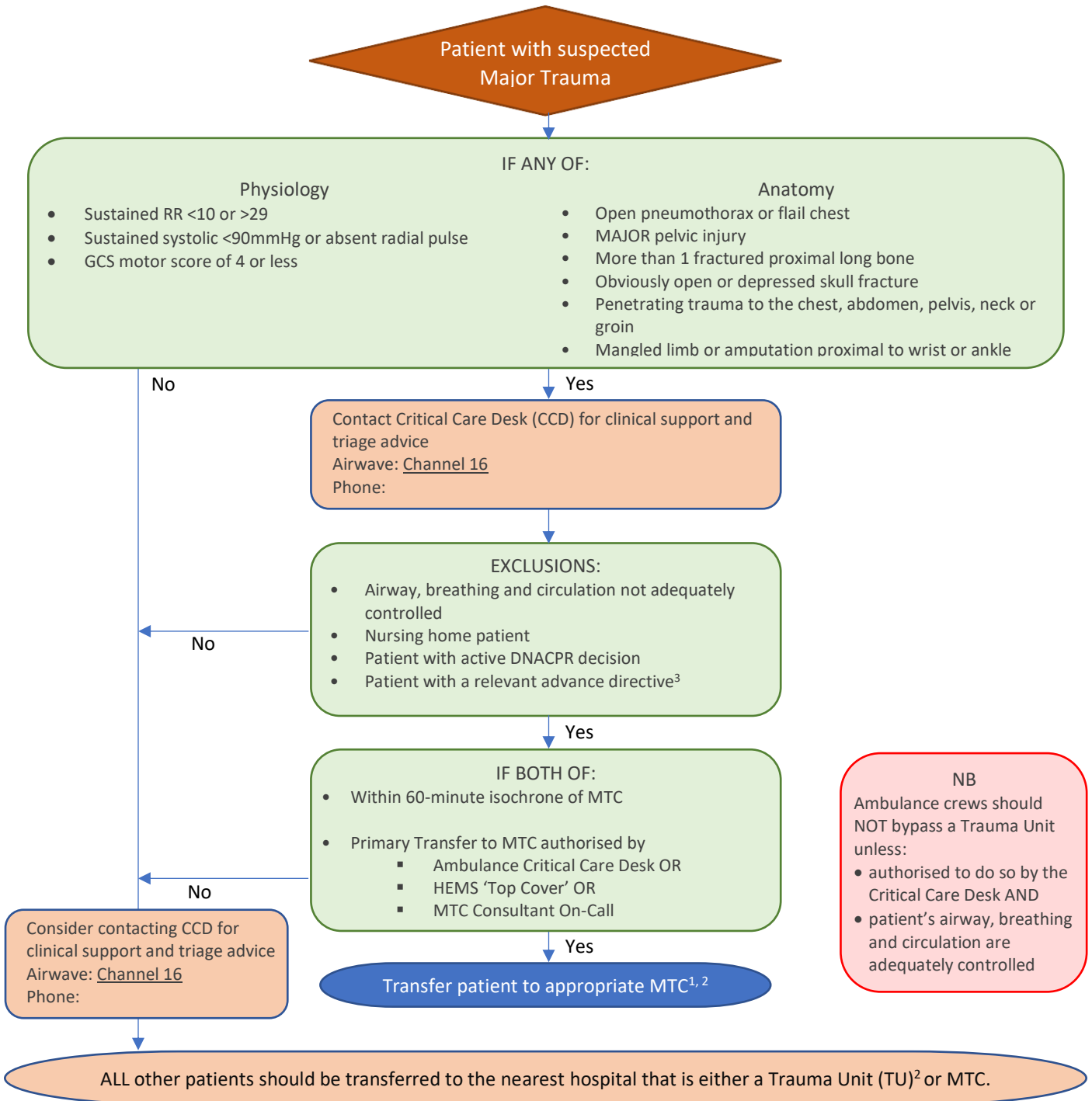
Sussex Trauma Network

South East London, Kent and Medway  
Trauma Network

South West London and Surrey Trauma  
Network

## PRE-HOSPITAL TRIAGE:

Current decision trees suspended. The networks will now move to the following trauma decision tree.



### Abbreviations:

CCD – Ambulance Service Critical Care Desk  
 DNACPR – Do Not Attempt Cardiopulmonary Resuscitation  
 MTC – Major Trauma Centre  
 TU – Trauma Centre  
 HEMS – Helicopter Emergency Medical Service

### Notes:

1. Appropriate MTC – Adults and children 16 and over – Royal Sussex County Hospital, Kings College Hospital or St. George's Hospital - unless relief agreed by adjacent MTC  
 Children under 16 – Kings College Hospital, St. George's Hospital or Southampton General Hospital
2. Patients should not be turned away from either MTC or TU once they have been conveyed. They should be assessed, and secondary transfer arranged if appropriate.
3. Relevant Advance Directive – a written signed document that shows the patient's wish to have limited care in circumstances that include the patient's present condition.

## SECONDARY TRANSFER PROTOCOLS

### Principles

1. These protocols apply after a patient has been assessed at a Trauma Unit and the assessing Team determine that the patient may benefit from transfer to a Major Trauma Centre.
2. Patients triaged to a TU should be assessed and stabilised within the ED and not 'turned around at the front door.
3. These protocols comprise two levels of transfers as follows:
  - a. **Immediate Transfers (<60 minutes)** – for patients with life threatening conditions.  
These patients will include those who have been taken to the Traumas Unit for attempted stabilisation due to distance from the MTC (> 60-minute isochrone), as well as patients who either deteriorate at the TU or have been found after initial assessment to have a life-threatening condition.
    - i. Patients meeting the exclusion criteria (nursing home patient, active DNACPR decision or relevant advanced directive) will not be suitable for immediate transfer.
    - ii. Contact SECAmb to arrange an immediate transfer to RSCH
    - iii. Treating senior clinician in TU to contact the ED Consultant at RSCH (01273 696955)
    - iv. Examples of pathologies requiring immediate transfer:
      1. Extradural haematoma with altered GCS
      2. Traumatic subdural haematoma in patients <70 years old and requiring airway support
      3. Proven vascular injury with on-going bleeding
      4. Truncal penetrating injury with haemodynamically instability or evidence of pericardial tamponade
      5. Penetrating injury to the neck with expanding haematoma
  - b. **All other transfers / requests for advice** –  
Either
    - i. for patients with a head injury contact the duty Neurosurgical Consultant or Registrar at RSCH (01273 696955) AND complete on-line referral on [www.referapatient.org/refer-a-patient](http://www.referapatient.org/refer-a-patient)

OR

    - ii. for all other cases contact the 'Major Trauma Advice Consultant' at RSCH.

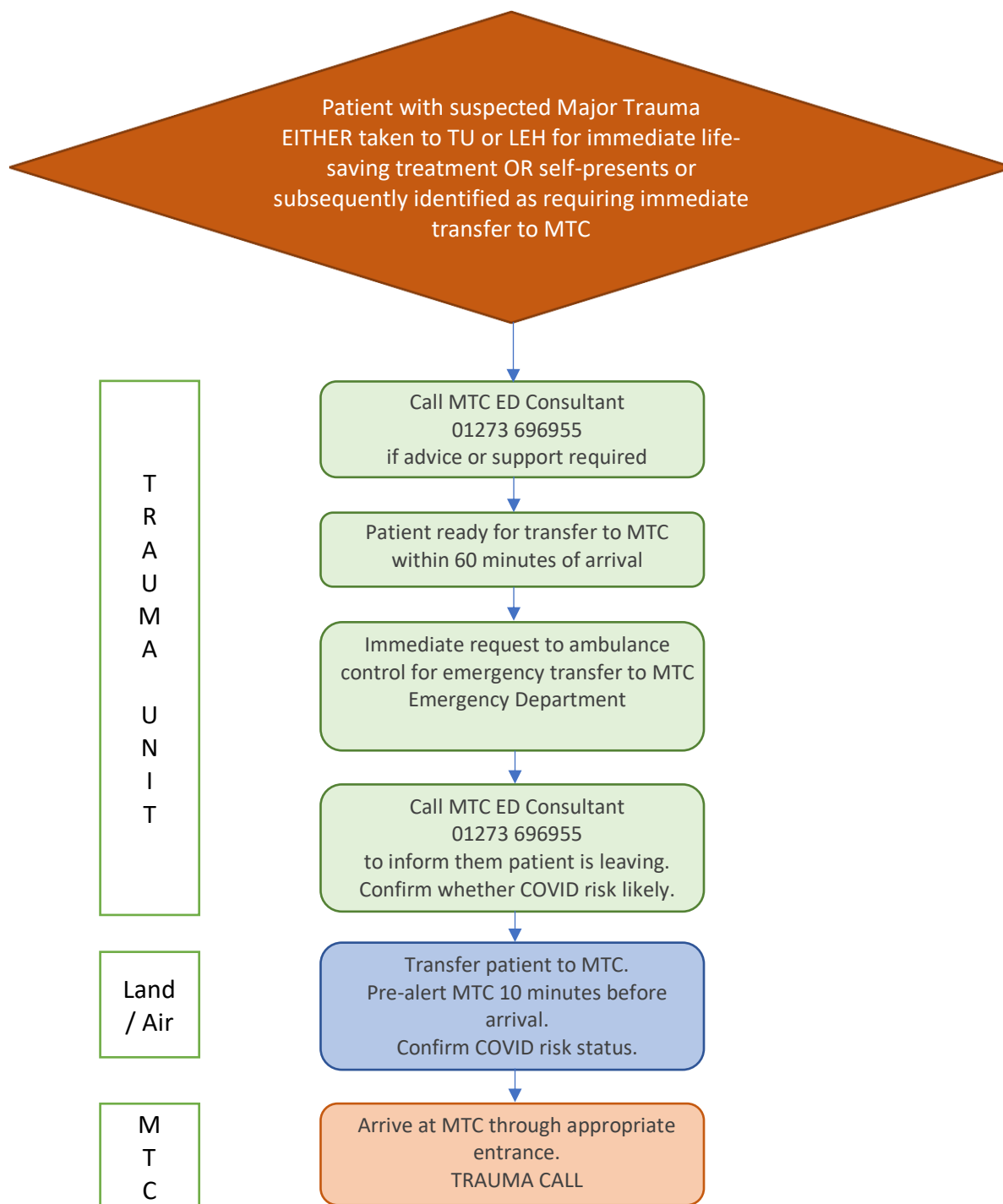
In either case this should ideally be from a consultant but must occur after discussion with the consultant leading the patient's care at the TU.  
DO NOT make adult trauma referrals by any other routes.  
Paediatric major trauma referrals should be made to your normal receiving Paediatric MTC.
4. All secondary transfers should only occur after a doctor at the receiving hospital has been informed of and agreed to the transfer.
5. The MTC will provide 24/7 access to a major trauma consultant and consultants in neurosurgery, cardiothoracic surgery, general surgery, paediatric surgery, liver surgery and intensive care to discuss the appropriateness and feasibility of transfer.
6. Wherever possible in the appropriate timeframe, discussion between sending and receiving hospital should be between Consultant and Consultant. If a Consultant cannot assess the patient sufficiently quickly (e.g. in the Immediate Transfer group), then the Consultant may delegate this role to a doctor who is able and authorised to:
  - a. perform an accurate assessment of the patient's condition and needs
  - b. agree to and arrange admission at the "sending hospital" if the outcome of the consultation is not to transfer the patient
  - c. act as host and arrange theatres etc. if the outcome of the consultation is for a specialist surgeon to attend perform the surgery at the "sending hospital".
7. The separate Transfer Protocol for Spinal Injury is suspended.
8. Exclusion Criteria for transfer of patients from TU to MTC:
  - a. nursing home patient
  - b. patient with a relevant advanced directive
  - c. patient refused by the consultant at the MTC
  - d. patient over the age of 75 with fixed, dilated pupils

9. When arranging Emergency or Urgent secondary transfer to the MTC always contact the Ambulance service. They will assess and decide whether transfer by HEMS might be more appropriate. Patients considered to have risk of COVID-19 should NOT be transferred by helicopter – because time to clean the helicopter is prohibitive.
10. The two algorithms below are for adults and children from their 16<sup>th</sup> birthday. For children under 16, referrals should be direct to relevant Paediatric MTC - Kings College Hospital or Southampton General Hospital. When transferring children to the Paediatric MTC, the telephone numbers to contact the ED Consultants are as follows:
  - a. Kings College Hospital: 0203 299 9000 ext. 5447
  - b. Southampton General Hospital: 023812 206 666 (Direct dial Resus Priority Phone).

## Immediate Transfers (<60 minutes)

For all Adults and Children from their 16th birthday

See principles listed above



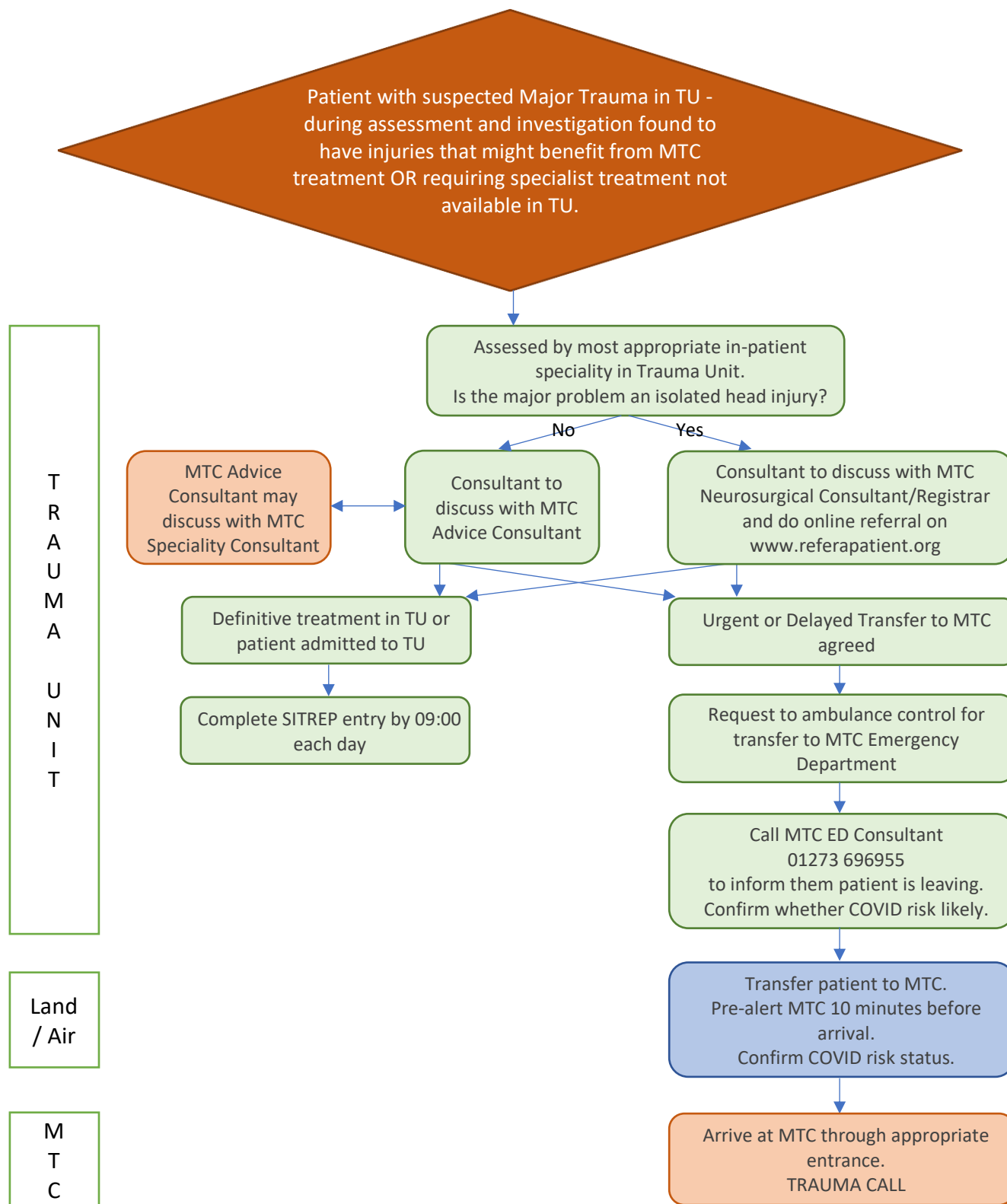
Notes:

4. When transferring children under 16 to a Paediatric MTC, the telephone numbers to contact the ED Consultants are as follows:
  - a. Kings College Hospital: 0203 299 9000 ext. 5447
  - b. Southampton General Hospital: 023812 206 666 (Direct dial Resus Priority Phone).

All Other Transfers / Requests for Advice  
(Non-immediate)

For all Adults and Children from their 16th birthday

See principles listed above



Notes:

4. When transferring children under 16 to a Paediatric MTC, the telephone numbers to contact the ED Consultants are as follows:
  - a. Kings College Hospital: 0203 299 9000 ext. 5447
  - b. Southampton General Hospital: 023812 206 666 (Direct dial Resus Priority Phone).

## SITREP REPORTS

Each Trauma Unit will complete SITREP entries for each Major Trauma patient who is still an inpatient in the TU and who has been referred to, or whose case has been discussed with, the MTC on a SITREP spreadsheet and e-mail it each day by 09:00 to [bsuh.sussestrauma@nhs.net](mailto:bsuh.sussestrauma@nhs.net) .

This will allow the MTC and the Network managers to track all patients that are still in the Trauma Units that might still require specialist advice or treatment.

For each patient, the following details will be required:

- HOSPITAL ID (Local)
- NAME
- DOB
- COVID STATUS IF KNOWN:- positive/unknown/negative
- CONTACT NUMBER FOR TREATING CONSULTANT
- BRIEF RESUME OF INJURY
- ONGOING CLINICAL ADVICE REQUIRED?: - yes/no
- MANAGED LOCALLY?: - yes/no
- ONGOING NURSING OF REHAB ADVICE REQUIRED?: - yes/no
- PATIENT DISCHARGED?: - yes/no

**NB. An MTC Consultant will only telephone the named TU Consultant if the ONGOING CLINICAL ADVICE REQUIRED section is marked as YES**