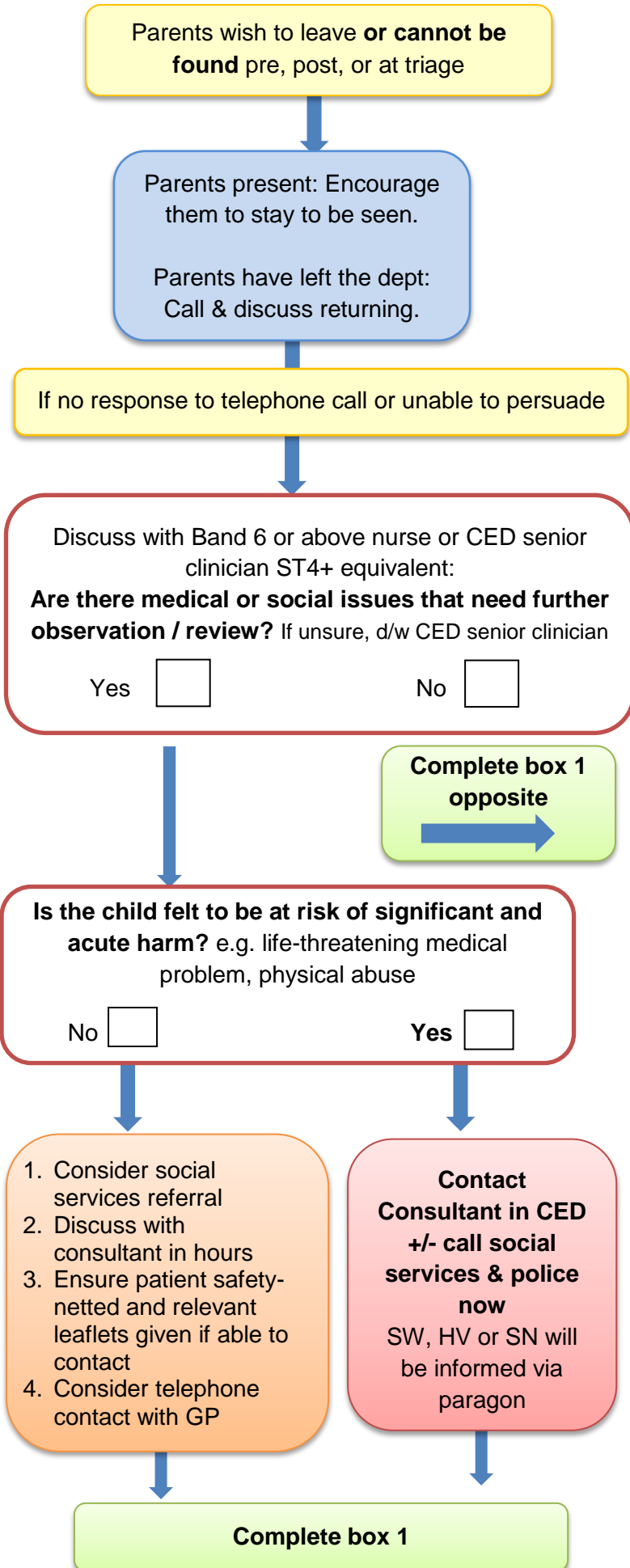


UHSussex Brighton Hospitals Flowchart for children who leave the Children's Emergency Department (CED) without being seen or medically discharged



Details of patient:

Name

Trust ID number

NHS number

Box 1. Please document reason for leaving and any conversations with family & put notes out for ACORNS nurse in DNW Tray. Continue in CED green notes if needed.

Safety netting advice given Yes N/A

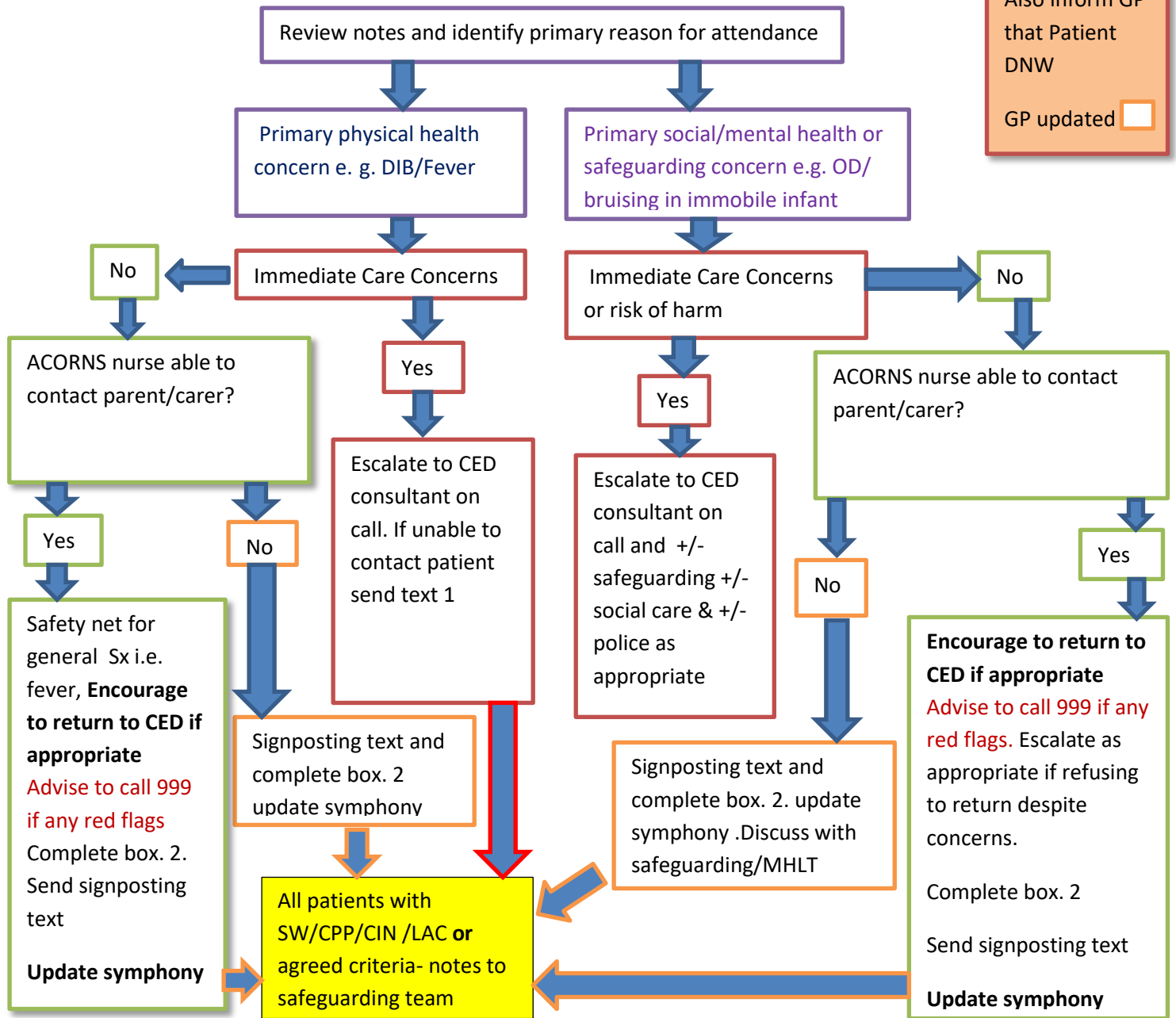
Relevant leaflets given Yes N/A

Suggestions for alternative care... Yes N/A

Signature, name and contact no:

Date:

For ACORNS team use only



If referred by GP to CED.
Also inform GP that Patient DNW
GP updated

Box 2. Details of conversation with parent or carer/ times of attempted contacts/texts

Parents plan to-

Return to CED

See GP

See pharmacist

Other:-

Signed / print name

Symphony Updated