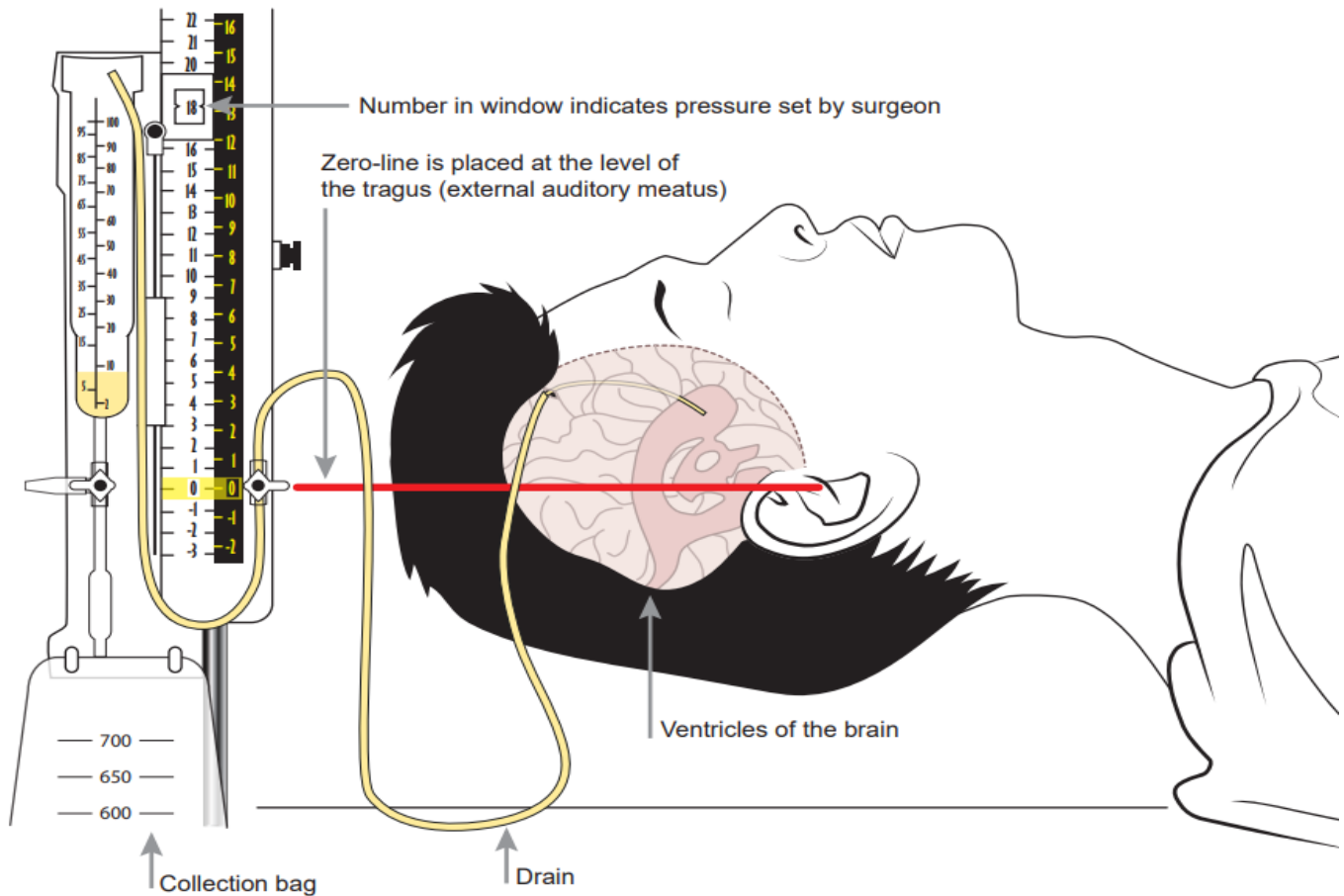


# UHS RSCH ICU Neurosurgical Prompt Cards

## EVD prompt card: EVD diagram

**NB: EVD systems may vary between manufacturers, please take time to familiarise yourself with the EVD at the bedside**



### **Additional Notes:**

- External Auditory Meatus may also be referred to as the Tragus
- The 'zero point' is where the stopcock to open/close the EVD to drainage is located
- The tap between the CSF chamber and the collection bag **MUST** be closed at all times – it is only opened when draining CSF from the chamber to the bag after the hourly measurements
- When emptying the CSF chamber into the collection bag, the zero point stopcock must be turned **OFF** to drainage, to prevent rapid siphonage of CSF from the ventricles into the chamber. Open the stopcock again once the collection bag tap is closed