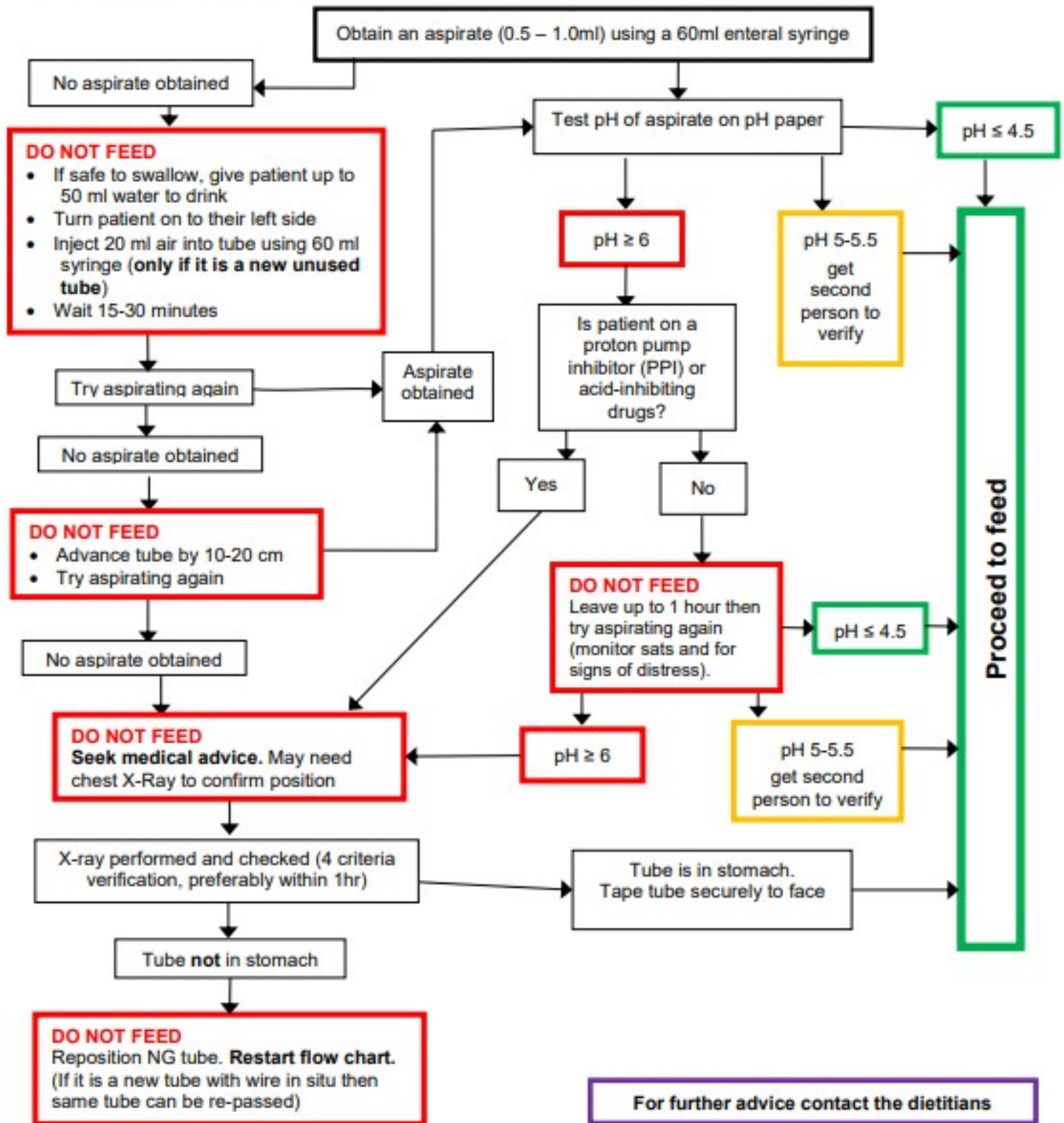


Appendix 2 – Decision tree for confirming position of nasogastric feeding tubes in adults

Decision tree for confirming position of nasogastric feeding tubes in adults

- Nothing is to be passed down an NG tube before confirmation of correct positioning (feed/water/medication)
- Do not remove the guidewire of new NG tubes until correct position is confirmed
- pH level of 5.0-5.5 requires a second person to check the pH level
- **Correct NG feeding tube position will be indicated if pH is 5.5 or less**



Adapted from NPSA
Updated July 2021