

In line with the Resuscitation Council UK

25th July 2022

Cardiac arrest and PPE

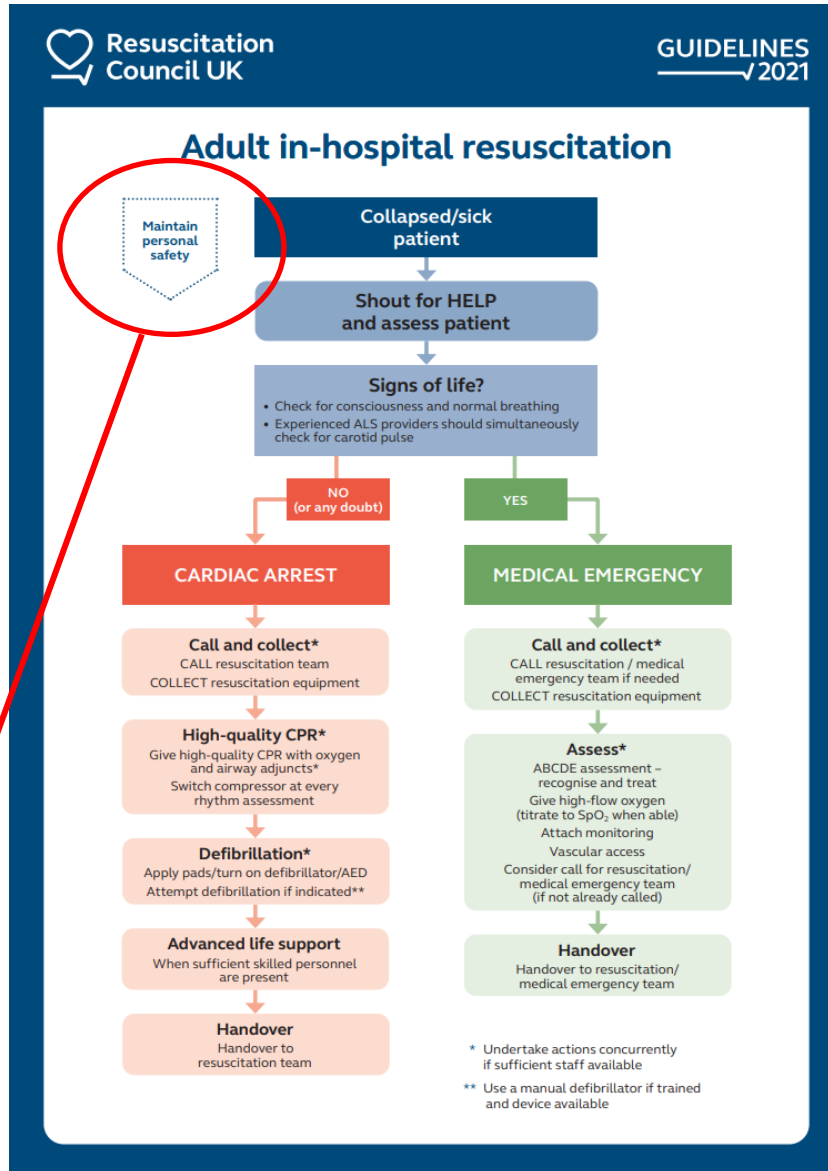
If suspected or confirmed COVID-19, put on an FFP3 mask (that you are fit tested for) before starting CPR.

Other PPE as per IPC but do not delay CPR to don full PPE.

If no suspicion of COVID-19, just start CPR (regardless of what, if any, mask you are wearing).

If, as part of your personal risk management for AGPs, you wear FFP3, you should continue to do so.

Two sets of full PPE (FFP3 mask, long sleeve gown, face visors and gloves) remain on all cardiac arrest trolleys, regardless of area.



Author: Lead Resuscitation Practitioner

Responsible committee: Resuscitation Operational Management Group

uhsussex.resuservices@nhs.net

We continue to follow RCUK advice which is that chest compressions are considered to be an AGP.

RCUK guidance can be found here:



This includes statements on the conflicting information from RCUK and Public Health England (PHE).

Suspected or confirmed COVID-19:

- Safe approach.
- Check responsiveness.
- Pull the alarm/shout for help.
- Open the airway.
- DO NOT place your face near the face of the patient.
- Take no more than 10 seconds to look for normal breathing and signs of life (only feel for a central pulse if you are competent to).
- If not already wearing one, put on an FFP3 mask and start chest compressions.
- Helper to phone 2222 and state:
 1. Covid cardiac arrest
 2. Department/Ward
 3. Wait for switchboard to confirm the information