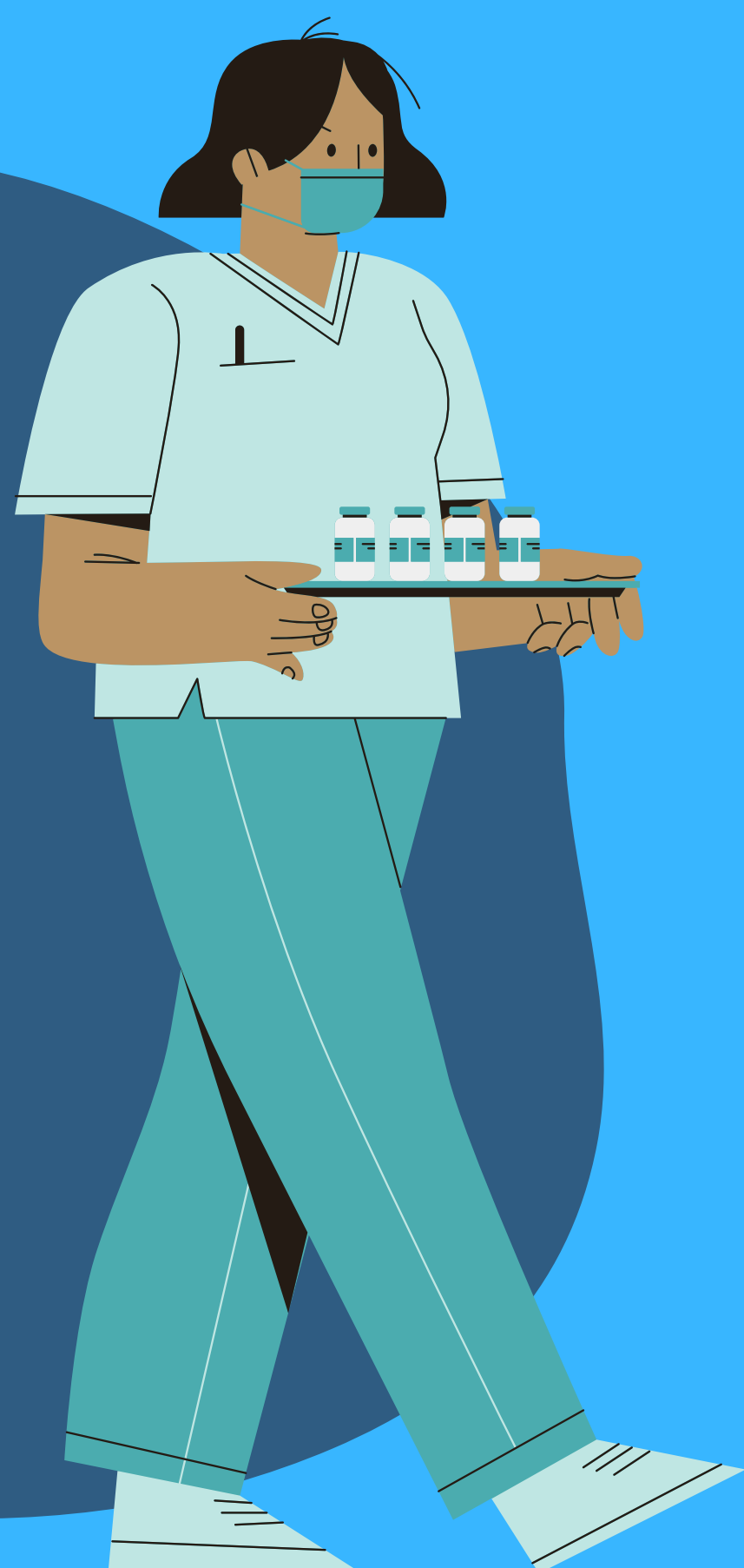


# HOSPITAL@NIGHT 12AM MEETING (PRH)

"An effective method of ensuring patient safety , fostering team spirit overnight and facilitating support"

**1**

Introductions

**2**

Acutely unwell patients highlighted:

- Acute take
- Medical wards/surgical wards

**3**

Site team update

- Bed situation
- Staffing resource allocation

**4**

Team members welfare check  
&  
Junior support facilitation

Scan QR code with  
your phone camera



Please Sign  
in using the  
QR code:

For any feedback or suggestions please email:

- [tanwir.jhetam1@nhs.net](mailto:tanwir.jhetam1@nhs.net)
- [jemina.onimowo@nhs.net](mailto:jemina.onimowo@nhs.net)