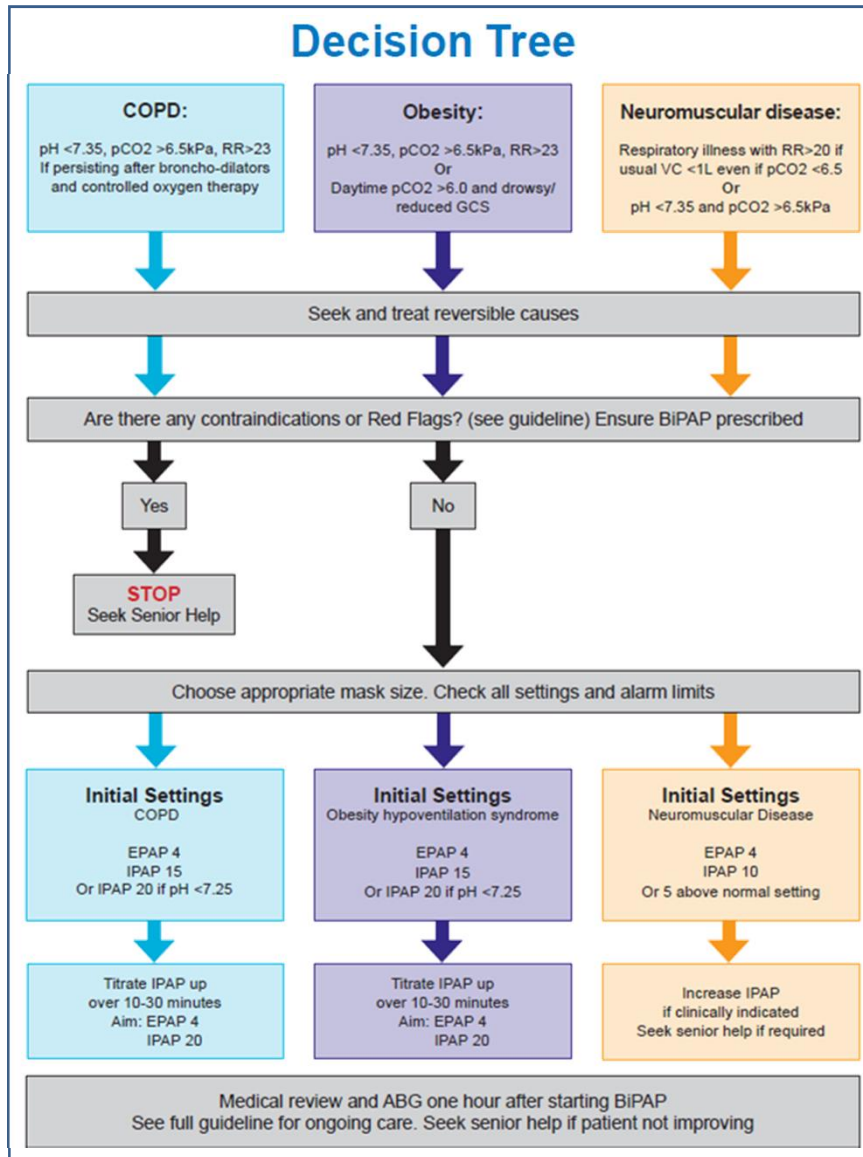
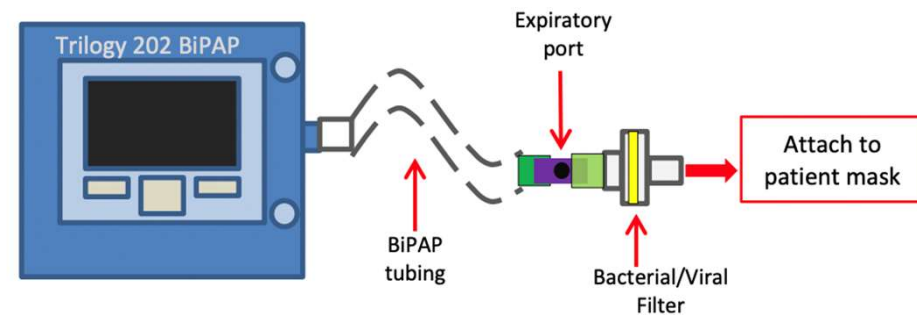


# Setting up BiPAP (NIV) for acute hypercapnic respiratory failure



1. Is the patient suitable for BiPAP? – use full pathway to document, including escalation plan
2. **BiPAP must be prescribed**
3. Inform CCOT, Medical SpR and Respiratory team
4. Set up tubing with bacterial filter and expiratory port, as shown below



5. Choose correct mask size, protect nasal bridge with dressing
6. Check all settings and alarms BEFORE connecting patient
7. See BSUH Microguide for full BiPAP set up guidelines