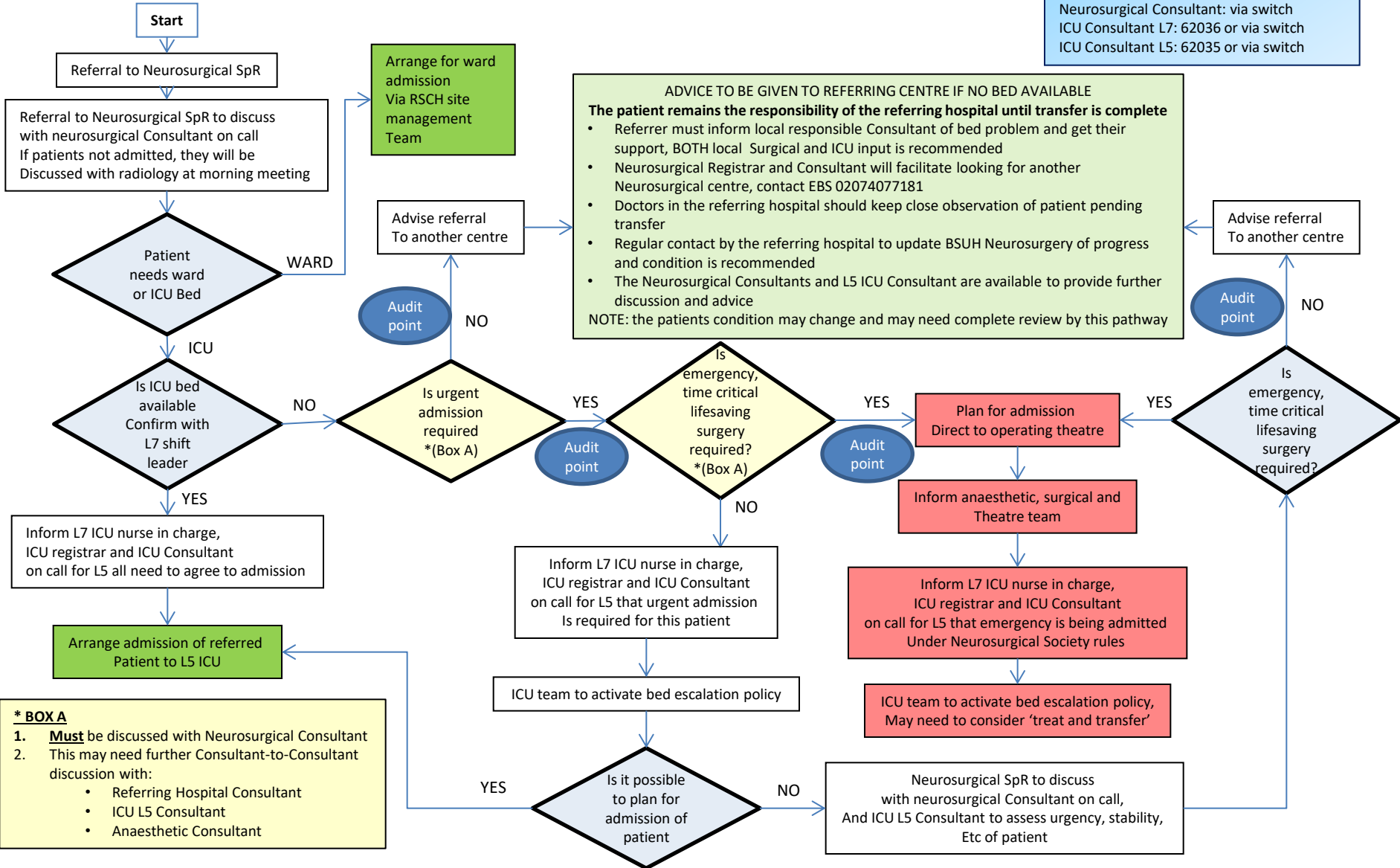


Pathway for Referral of Patients with Traumatic Brain Injury, Subarachnoid Haemorrhage or other Neuro-Surgical Emergency to the Neurosurgical Services at Brighton and Sussex University Hospitals

Useful Contacts:
 Royal Sussex County Hospital: 01273696955
 Neuro-surgical SpR: 62032
 ICU SpR: bleep via switch 8413
 ICU nurse in charge L7: 62008
 ICU Nurse in charge L5: 62015
 Neurosurgical Consultant: via switch
 ICU Consultant L7: 62036 or via switch
 ICU Consultant L5: 62035 or via switch



ADVICE TO BE GIVEN TO REFERRING CENTRE IF NO BED AVAILABLE
The patient remains the responsibility of the referring hospital until transfer is complete

- Referrer must inform local responsible Consultant of bed problem and get their support, BOTH local Surgical and ICU input is recommended
- Neurosurgical Registrar and Consultant will facilitate looking for another Neurosurgical centre, contact EBS 02074077181
- Doctors in the referring hospital should keep close observation of patient pending transfer
- Regular contact by the referring hospital to update BSUH Neurosurgery of progress and condition is recommended
- The Neurosurgical Consultants and L5 ICU Consultant are available to provide further discussion and advice

NOTE: the patients condition may change and may need complete review by this pathway

*** BOX A**

- Must** be discussed with Neurosurgical Consultant
- This may need further Consultant-to-Consultant discussion with:
 - Referring Hospital Consultant
 - ICU L5 Consultant
 - Anaesthetic Consultant