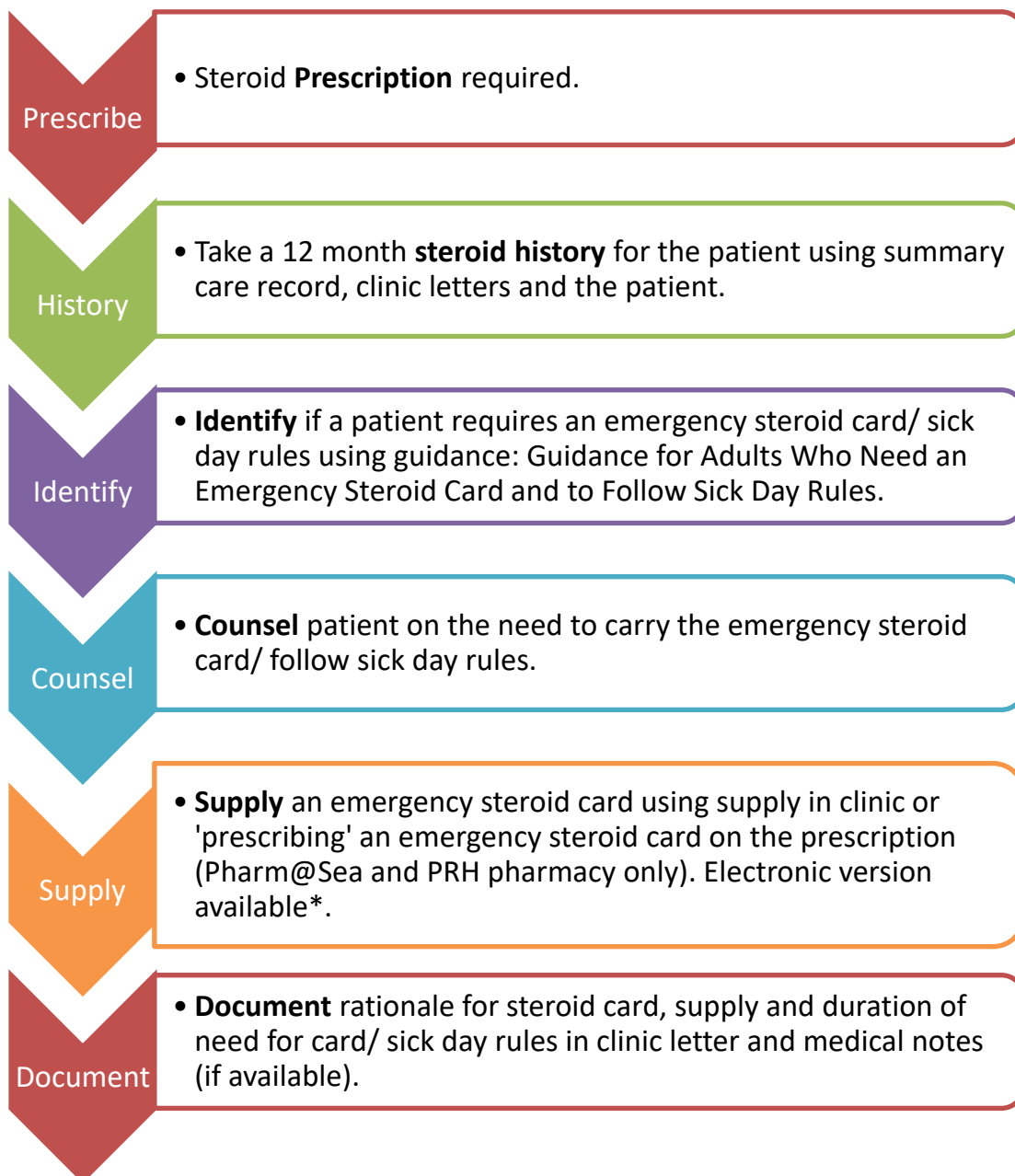


Prescriber Expectations Emergency Steroid Cards for Adults

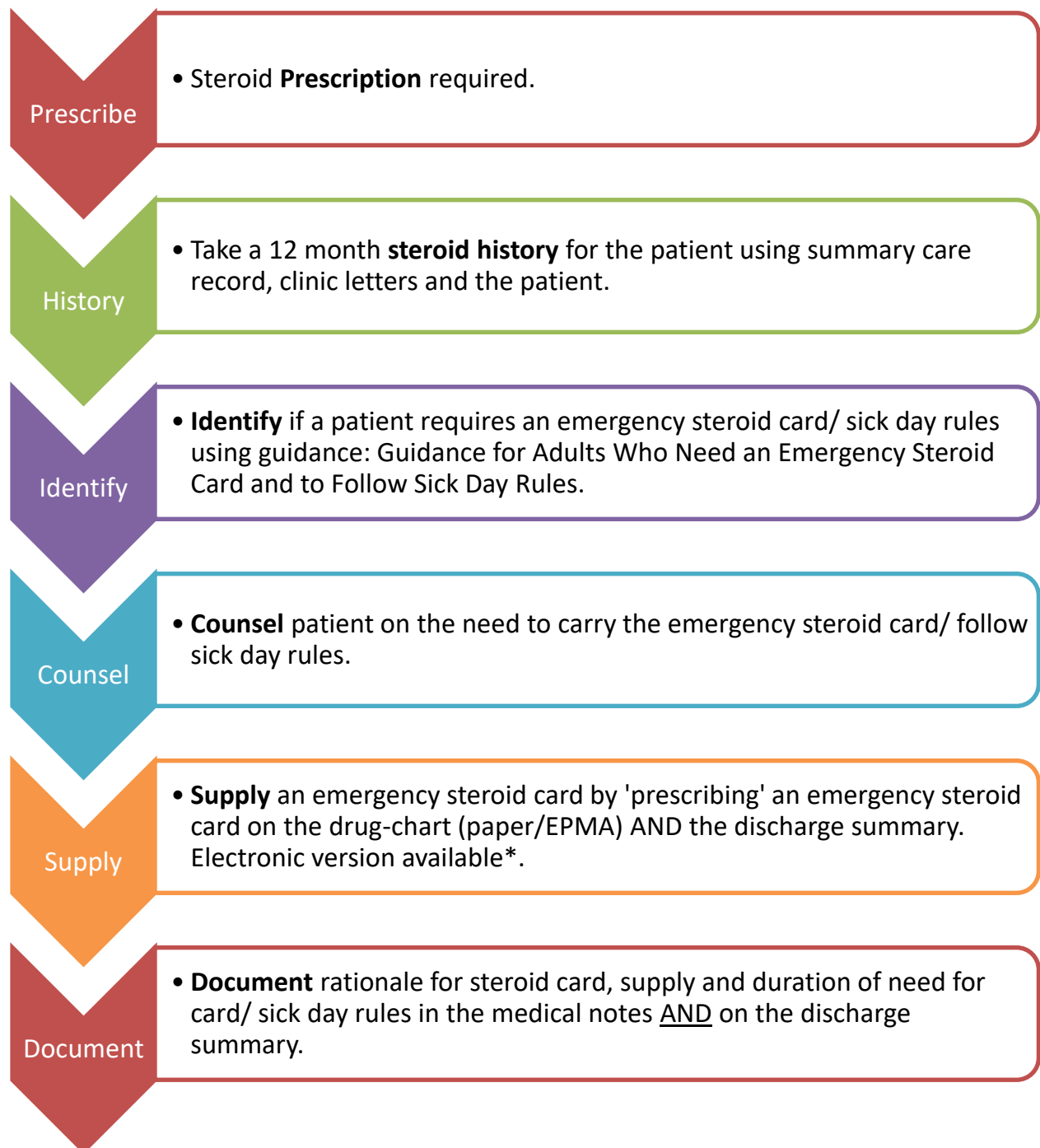
Royal Sussex County Hospital, Princess Royal Hospital, Sussex Eye Hospital

Pharmacists are actively encouraged to perform any of these steps regardless of non-medical prescribing status although primary responsibility resides with the prescriber.

Outpatients



Inpatients



*Electronic Emergency Steroid Card link:

<https://www.endocrinology.org/media/3873/steroid-card.pdf>