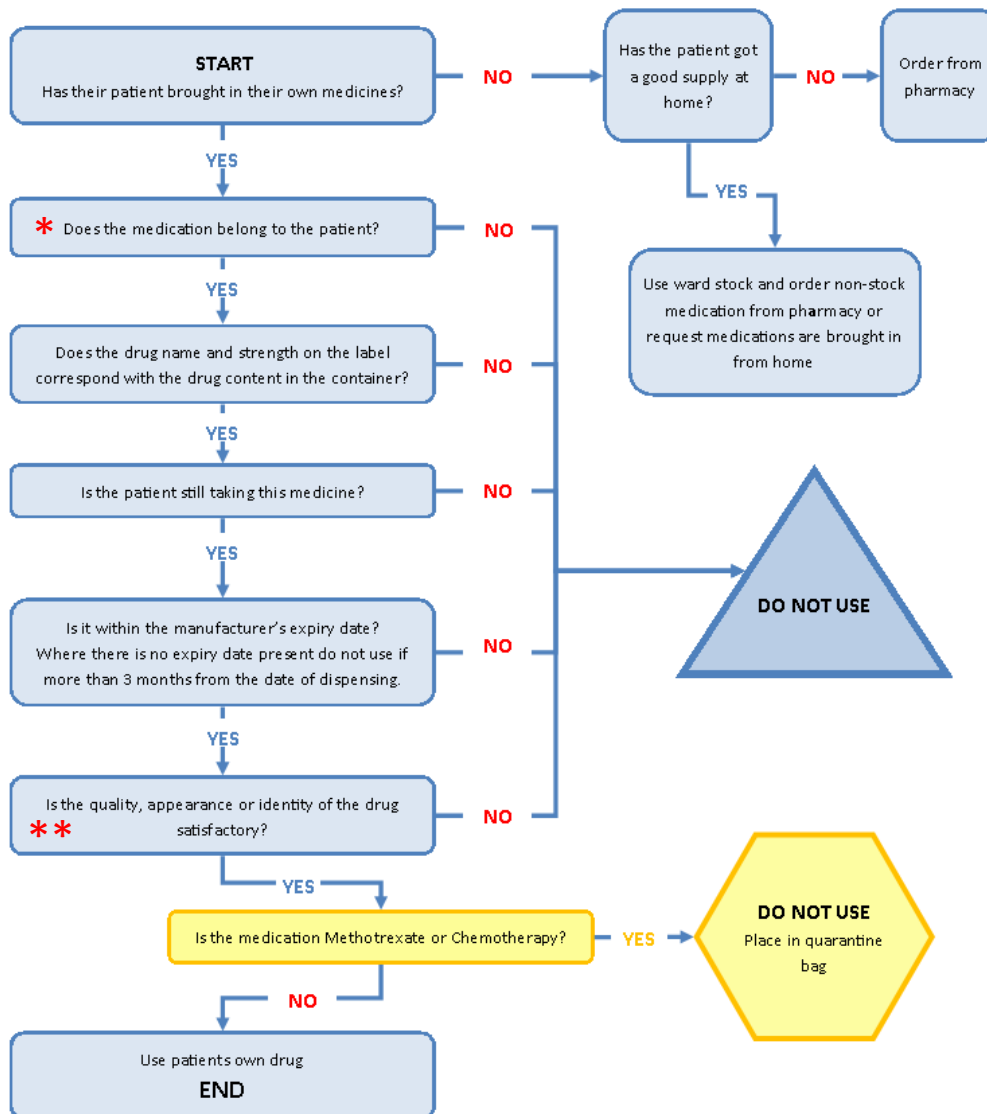


# Nurse led checking of Patients Own Drugs (POD's)



- Do **NOT** use blister packs
- Do **NOT** use eye / ear drops unless within the 4 week expiry date
- Do **NOT** use fridge items unless it can be confirmed how long they have been out of the fridge
- Do **NOT** use insulin that has been out of fridge for more than 4 weeks

\* Check name on label is that of the patient

\*\* Inspect for damage, presence of contaminants, alterations to label etc.