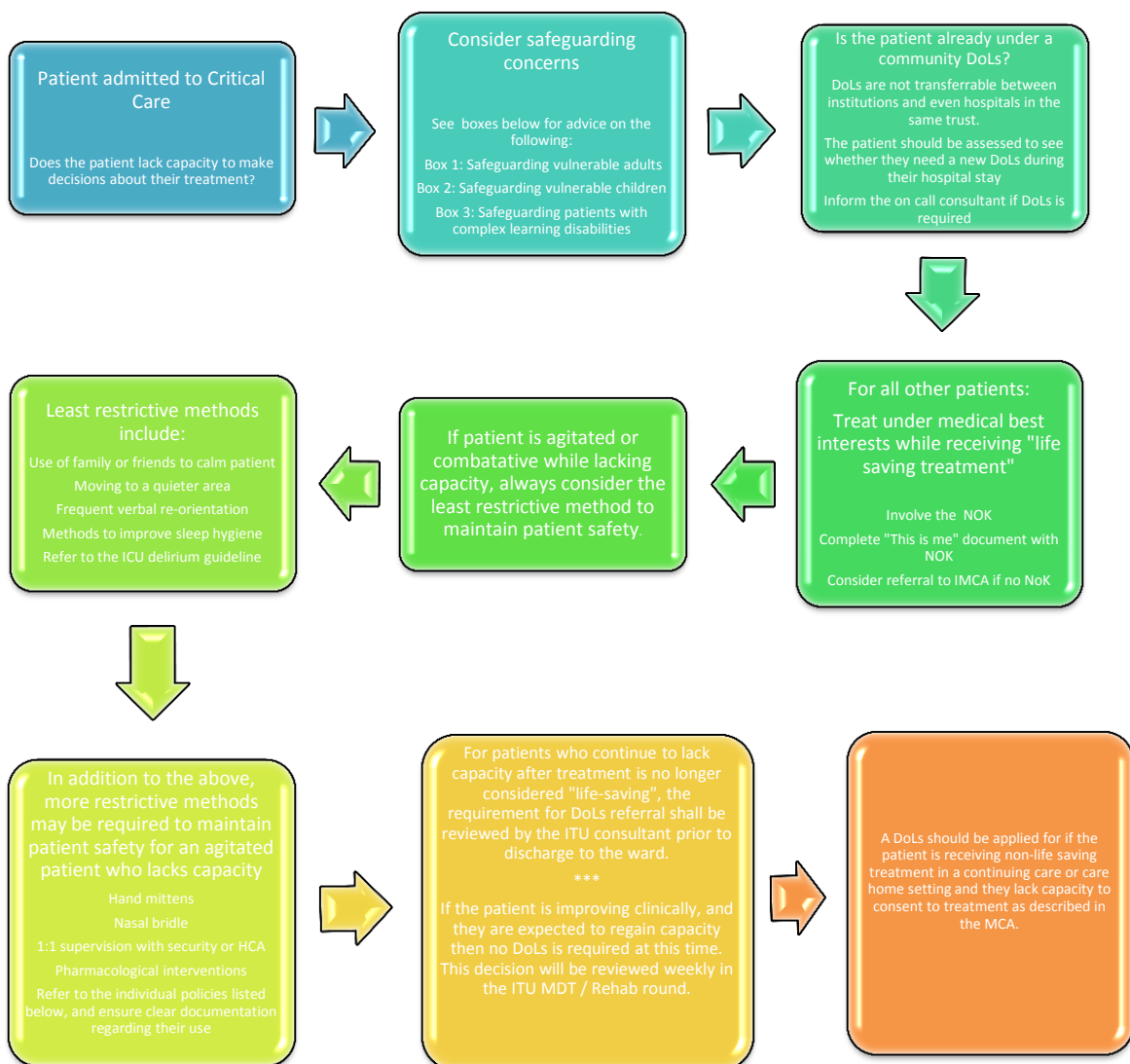


## This flow chart is for use in critical care areas only

Its use is designed to guide the referral process for applications for the deprivation of liberty and wider safeguarding issues in critical care.

The flow chart is intended to be a guideline only, and not prescriptive.

It will be updated as the government review of the DoLs process evolves.



## Box 1:

### Safeguarding Vulnerable Adults

- Consider referral if the patient is any of the following:
- The main carer for another vulnerable adult such as:
  - Adults with complex learning disabilities
  - Adults with dementia
  - Adults with long term care needs
- Consider referral if there might be:
  - Issues of domestic violence
  - Issues of FGM
- Adult safeguarding team:
- Jo Henderson, nursing lead ext 64972
- Susan Knight, ext 8046
- Hospital Social Work Team, RSCH ext 4001
- Hospital Social Work Team, PRH Duty Social Worker: 07885 475247
- Out of hours:
- Brighton and Hove - Social Care Emergency Duty Team - 01273 295555
- West Sussex - Social Care Emergency Duty Team - 01243 642121

## Box 2:

### Safeguarding vulnerable children

Consider referral if patient is the main carer for children under 18

Ask other family members about the care of the children. They may well be safe and well cared for, but may appreciate support.

If any concerns, please refer and inform the family members of referral.

Contact Children's safeguarding team on 2363

Or Duty Social Worker out of hours

Further resources on BSUH intranet

## Box 3:

### Safeguarding patients with complex learning disabilities

Inform the complex LD team of the patient's admission to critical care

Refer to the patient passport for information regarding the patient

Refer to the patient's family or carers and involve them as much as appropriate regarding the care of the patient

Learning disabilities liaison team:  
Direct Dial is 01273 664975  
Internal ext. 64975

The LD Liaison Nurses are Polly Mitchell and Becky Quin  
polly.mitchell@sussexpartnership.nhs.uk / becky.quin@sussexpartnership.nhs.uk

The PRH mobile number is for the West Sussex Liaison Nurse but it will not be picked up by Polly and Becky if she is on leave etc. so may need to refer to them on the above ext.

## Links to resources and policies:

Link to JICS helpful review article Deprivation of Liberty and intensive care

[https://www.ncbi.nlm.nih.gov/pmc/articles/PMC5810877/pdf/10.1177\\_1751143717730677.pdf](https://www.ncbi.nlm.nih.gov/pmc/articles/PMC5810877/pdf/10.1177_1751143717730677.pdf)

LD Liaison team <http://nww.bsuh.nhs.uk/clinical/teams-and-departments/nursing-and-midwifery/learning-disability-liaison-team/>

Safeguarding children <http://nww.bsuh.nhs.uk/clinical/teams-and-departments/safeguarding-patients/safeguarding-children/>

Safeguarding adults <http://nww.bsuh.nhs.uk/clinical/teams-and-departments/safeguarding-patients/safeguarding-adults-at-risk/>

IMCA referral form <http://nww.bsuh.nhs.uk/clinical/teams-and-departments/safeguarding-patients/safeguarding-adults-at-risk/independent-mental-capacity-advocate/>

DoLs referral forms and resources <http://nww.bsuh.nhs.uk/clinical/teams-and-departments/safeguarding-patients/safeguarding-adults-at-risk/deprivation-of-liberty-safeguards-dols/>

Critical care delirium guideline <http://rxhws001/ICU/Home/GuidelinesProtocols/ClinicalGuidelines/tabid/68/Default.aspx>

BSUH Hand mitten policy

BSUH 1:1 supervision policy

BSUH Nasal bridle policy <http://nww.bsuh.nhs.uk/search/?q=bridle>