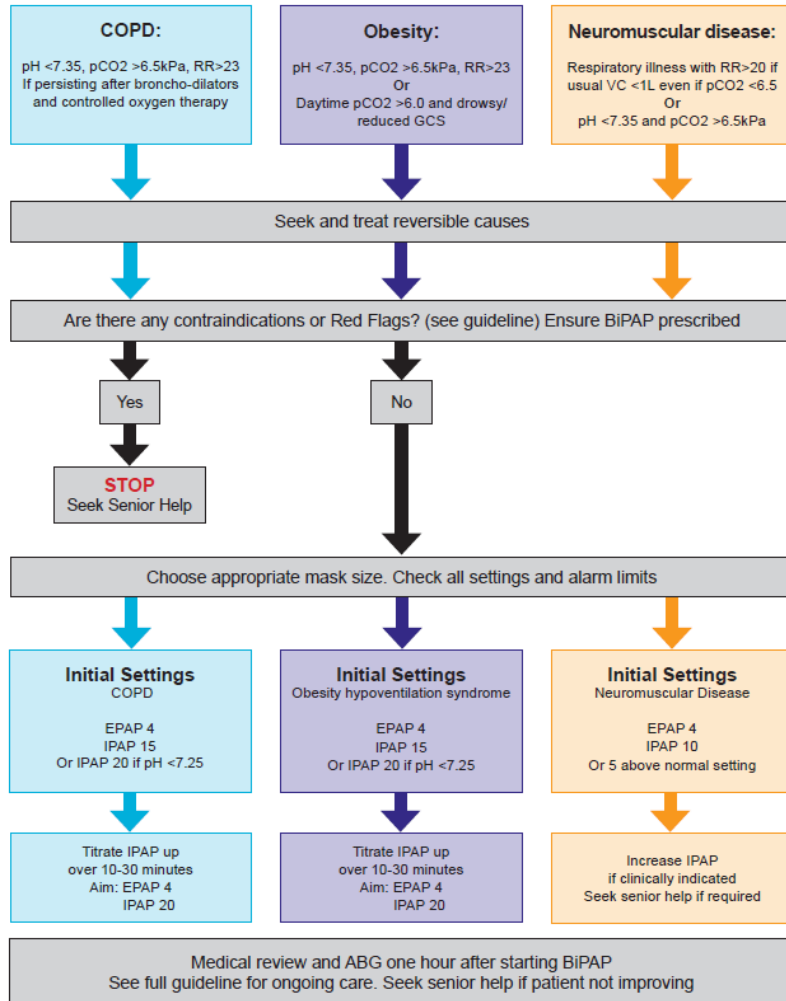


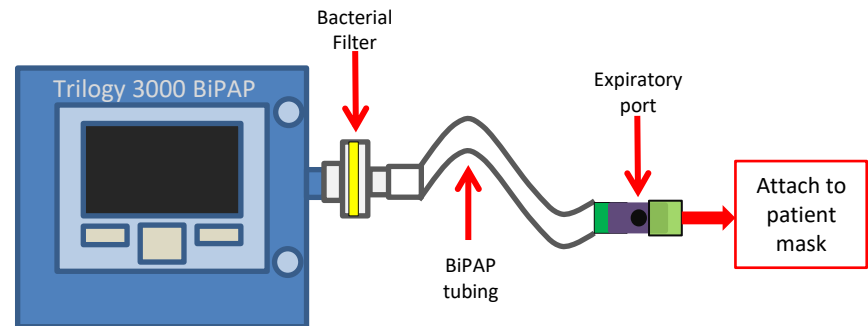
# Setting up Non-Invasive Ventilation (BiPAP)

## Decision Tree Setting up BiPAP for acute hypercapnic respiratory failure

**NHS**  
Brighton and Sussex  
University Hospitals  
NHS Trust



1. Is the patient suitable for BiPAP? – use full pathway to document including escalation plan.
2. BiPAP must be prescribed.
3. Inform CCOT, Medical SpR and Respiratory team.
4. Set up tubing with bacterial filter and expiration port.



5. Choose correct mask size, protect nasal bridge with dressing.
6. See BSUH microguide for full BiPAP set up guidelines.

