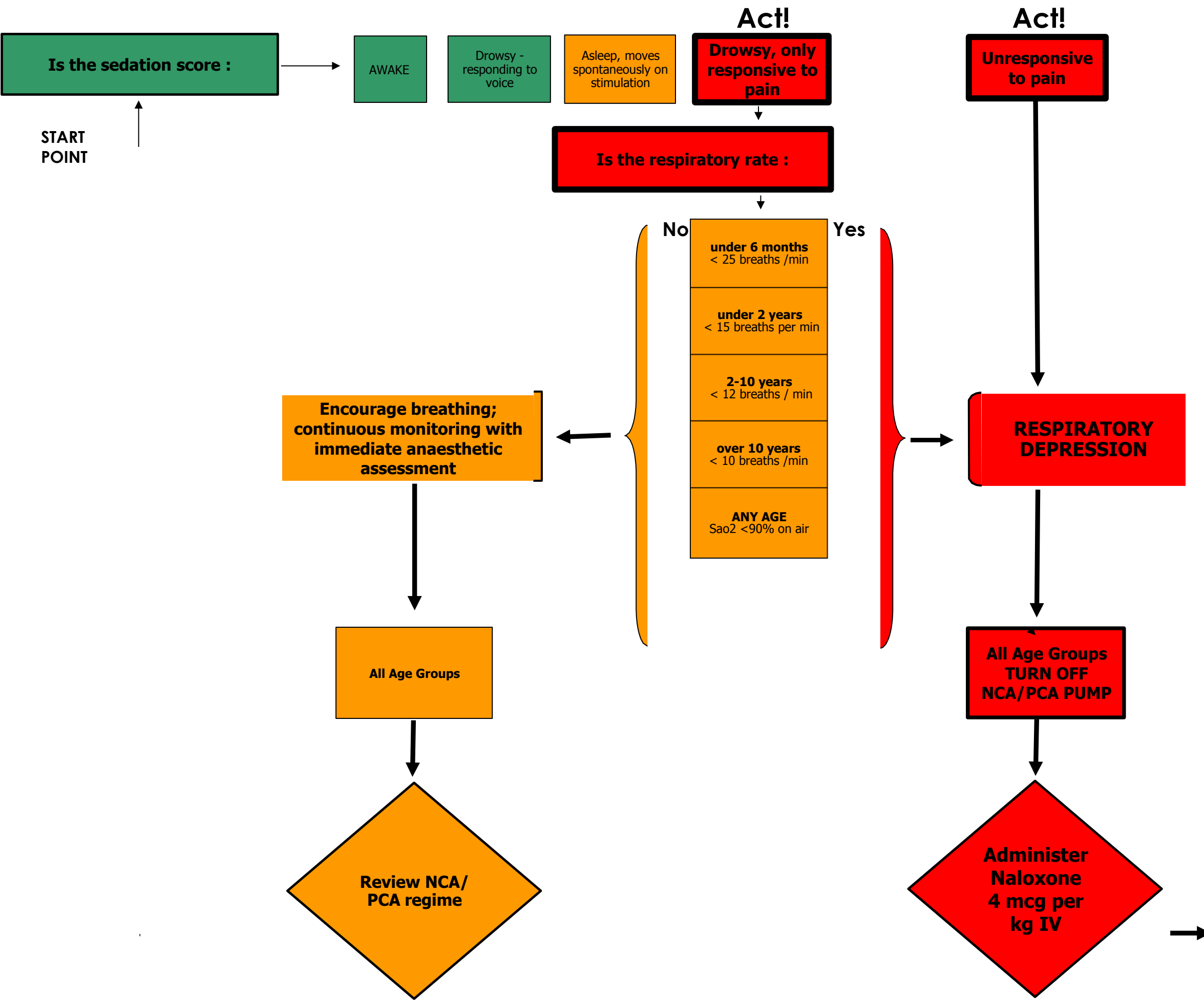


**Protocol for Opioid Induced Respiratory Depression - RACH**



administer 4mcg/kg IV every 2 minutes up to a maximum of 100mcg or until respiratory rate is :

- under 6months > 25 breaths / min
- under 2 years > 15 breaths/min
- 2-5 years >12 breaths / min

**Immediate anaesthetic review**

**Continuous monitoring for 2 hours - mandatory\***  
(SaO2; RR; P; Sedation, pain and emesis score)

*\* the duration of action for naloxone is shorter than most opioids so patients must be closely monitored for the reoccurrence of opioid toxicity when the antagonist effects of naloxone wane. Additional doses given at intervals of 20 minutes to 2 hours may be necessary to maintain reversal. Monitoring can take place on the ward or in recovery but it must be continuous*

*\*O2 saturation can remain high in the presence of respiratory depression when the patient is receiving oxygen*

