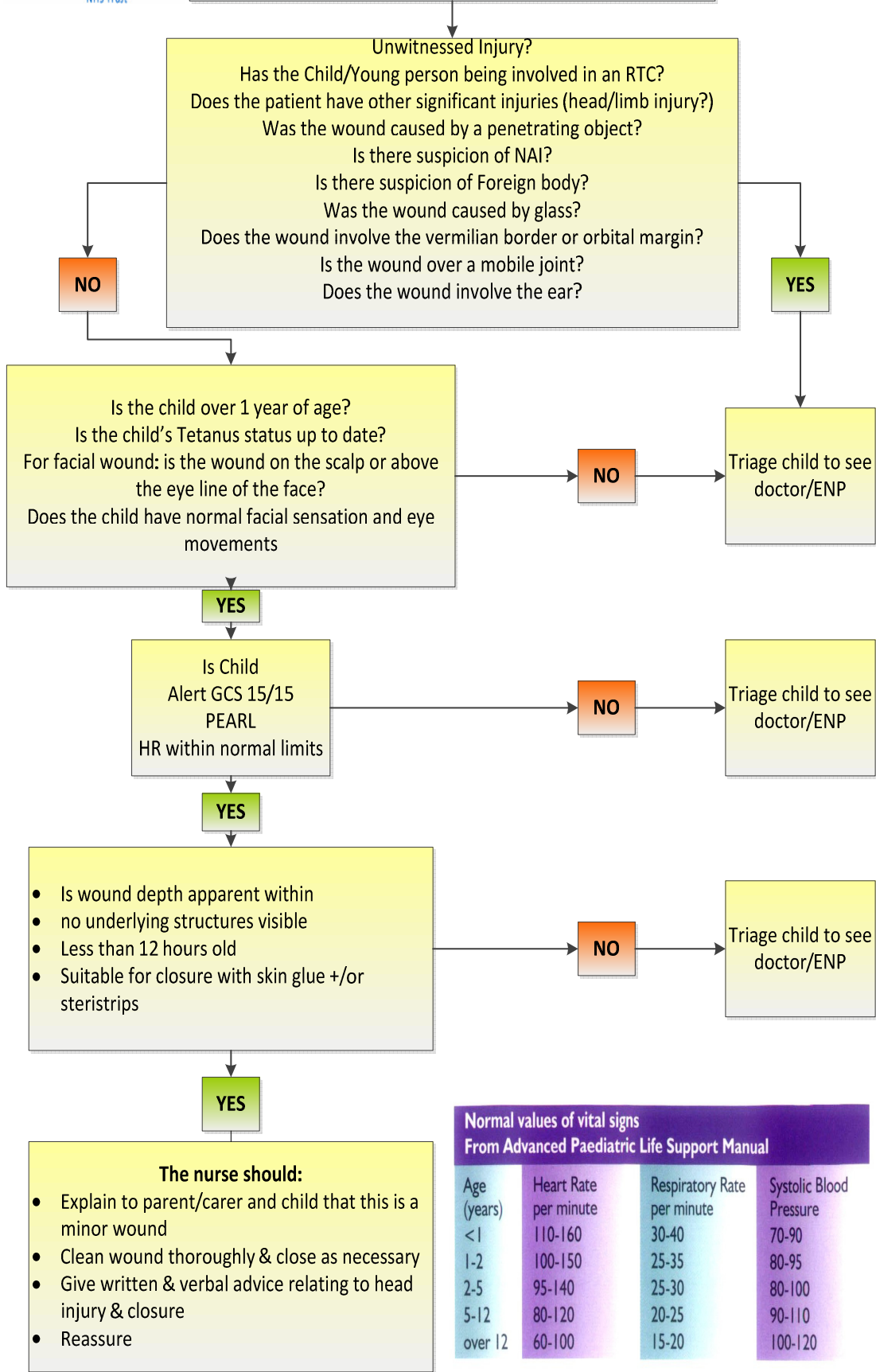


Simple wounds (Uncomplicated) See & Treat Guidelines



Normal values of vital signs
 From Advanced Paediatric Life Support Manual

Age (years)	Heart Rate per minute	Respiratory Rate per minute	Systolic Blood Pressure
<1	110-160	30-40	70-90
1-2	100-150	25-35	80-95
2-5	95-140	25-30	80-100
5-12	80-120	20-25	90-110
over 12	60-100	15-20	100-120