

Wound Care Formulary: PICO 7 Dressings

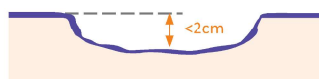
	Dressing Size	Order Code	Order Code	Order Code
		1 Dressing Kit + Pump	2 Dressings Kit + Pump	5 Dressings ONLY
PICO 7	10cm x 20cm	ELZ889 £129.60	ELZ899 £142.56	ELZ909 £100.76
	10cm x 30cm	ELZ890 £129.60	ELZ900 £142.56	ELZ910 £134.45
	10cm x 40cm	ELZ892 £139.68	ELZ902 £153.65	ELZ912 £176.26
	15cm x 15cm	ELZ891 £129.60	ELZ901 £142.56	ELZ911 £100.76
	15cm x 30cm	ELZ894 £139.68	ELZ904 £163.45	ELZ914 £161.14
	20cm x 20cm	ELZ895 £158.54	ELZ905 £179.26	ELZ915 £179.26
	25cm x 25cm	ELZ896 £148.60	ELZ906 £163.45	ELZ916 £280.09
	Multisite 15cm x 20cm	ELZ897 £158.56	ELZ907 £153.65	ELZ917 £221.64
	Multisite 15cm x 20cm	ELZ898 £148.60	ELZ908 £163.45	ELZ918 £336.11

PICO 7 System has been shown to be capable of managing low to moderate exudate, and deliver nominal -80mmHg therapeutic negative pressure in large wounds of depths up to 4.5cm when used with an appropriate NPWT filler as demonstrated *in vitro*¹

PICO Pump can be used with or without fillers

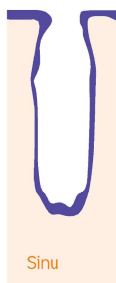
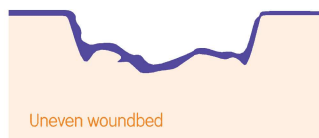
A full assessment of the wound is recommended before considering whether it is appropriate to use a wound filler or to apply the PICO sNPWT dressing directly to the wound.

If the wound depth is under 2cm the PICO dressing can be applied directly to the wound without the need for a filler. Depth – wounds greater than 0.5cm (1/4in) in depth are likely to require a filler to ensure adequate treatment of all the wound surfaces.



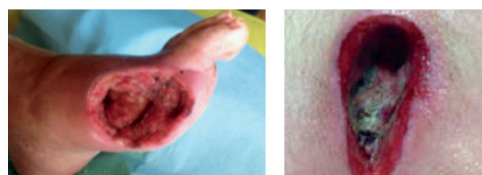
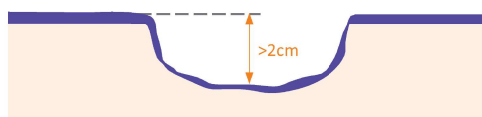
Wounds types under 2cm that the use of a filler would be appropriate:

- The wound bed is uneven
- There is undermining
- The wound is a sinus



PICO System fillers

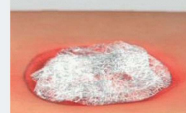
If the wound depth is greater than 2cm deep you must use an appropriate NPWT filler. Both gauze and foam fillers are available for use with PICO Pump to ensure that negative pressure reaches the wound bed.¹



(Examples of deeper wounds)

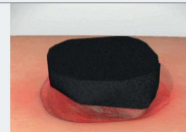
Application of the filler

Gauze filler



- Apply layer of saline-moistened antimicrobial gauze to wound bed. Continue to apply in layers until the gauze loosely fills the entire wound cavity.
- Avoid overpacking the wound cavity.
- Ensure the gauze is not overlapping onto the peri-wound area.

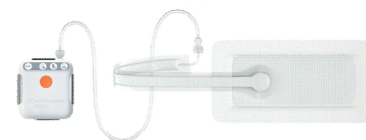
Foam filler



- Cut the foam to fit the size and shape of the wound
- Do NOT cut the foam directly over the wound
- Please ensure the foam is not overlapping onto the peri-wound area.

Both the Gauze and Foam Wound Fillers are available separately from the Equipment Library at BSUH ONLY

Single Use Negative Pressure Wound Therapy System



A Dressing correctly positioned and is acceptable to be left in place

B Dressing requires change - port may block with fluid

C Dressing requires change - absorbent area is full



For detailed product information, including indications for use, contraindications, effects, precautions, warnings, and important safety information, please always consult product's Information for Use (IFU) prior to use.