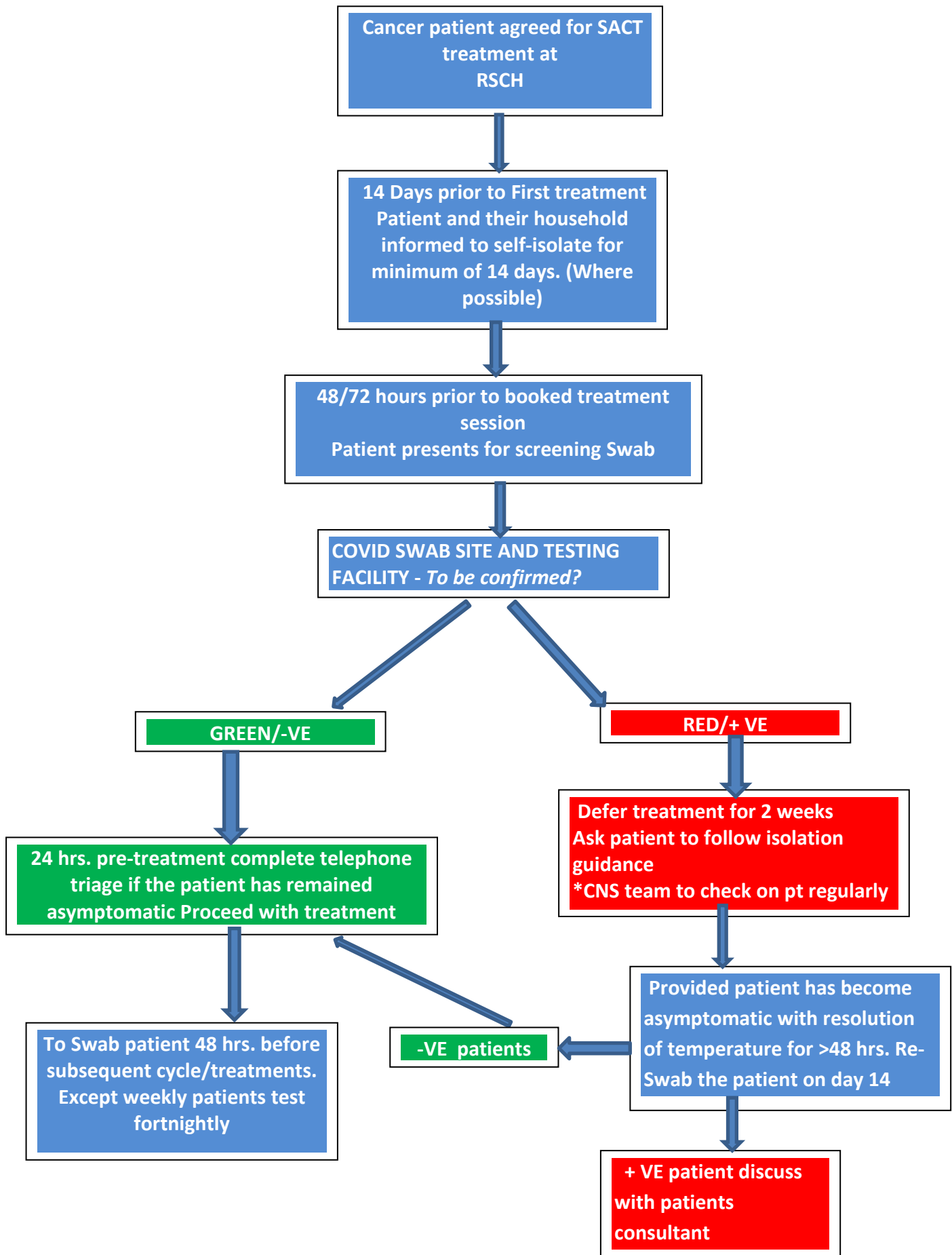


Systemic Anti-Cancer Treatment (SACT) Day and inpatient treatment

COVID-19 screening Swab.



General principles

This programme will encompass ALL day case and in-patients attending the treatment day units and wards. *It will not include attendance for outpatient appointments.*

Non Cancer procedures such as IV iron, Venesection etc. could dispense with COVID-19 screening if these procedures are undertaken in a separate unit for example for BSUH allocation PRH haematology/Oncology day unit for these treatment or cohorted for treatment at a different time Eg Saturdays or pre specified times of the day.

All Systemic Anti-Cancer Treatment (SACT) patients and household members should be advised to self-isolate for 14 days prior to the start of Oral, S/C or IV SACT.

24 hours pre-attendance, patients should be contacted to ensure they do not have symptoms suggestive of COVID-19.

All day unit attendees should be provided with a surgical mask to be used for the duration of their stay on the unit and encouraged to remove disposal gloves.

COVID-19 screening

All attendees must have a COVID-19 swab taken 48 hours prior to attending the unit.

Day of attendance	Day screening swab required
Monday	Friday
Tuesday	Friday
Wednesday	Monday
Thursday	Tuesday
Friday	Wednesday

- Where possible the patients should have their pre-treatment bloods taken at the same time, if appropriate testing area can be identified.
- Transfusion patients who do not have a 7 day cross match waiver cannot therefore be transfused on a Tuesday.

Patients should have a screening swab taken prior to every episode of treatment, though not more frequently than fortnightly (for those on weekly treatments).

Patients who remain positive when re-swabbed to be discussed at regional COVID SACT consultant Huddle for on-going treatment decisions

Testing capacity required:

Pre COVID 19 weekly patient activity:

- Haematology patients - 150 patients per week
- Sussex cancer centre - 205 patients per week

Currently activity has reduced but with restarting further treatment activity we predict we will require testing Capacity for a maximum total of approx. 350 patients per week.