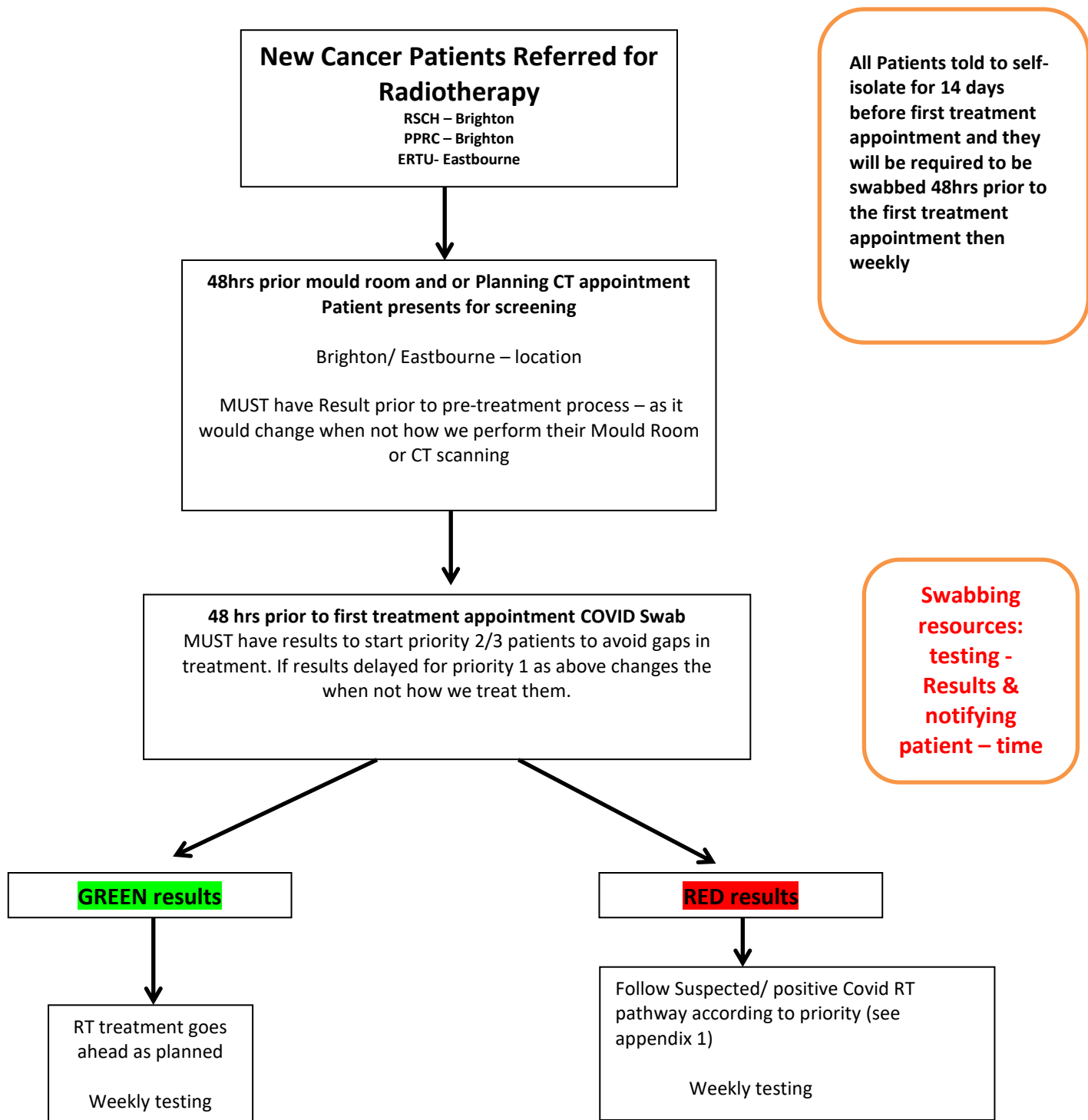


### COVID-19: Testing On Treatment Radiotherapy Patients

Approximately = currently 250 patient tests weekly



	RSCH (weekly)	ERTU (weekly)	Sub Total per week	+ PPRC Recovery	Total weekly
Pre-treatment	Monday – Friday 50 patients	Thursday + adhoc 14 patients	64	N?A	64
Treatment New starters	30 new pts	20 new pts	50	15 new pts	65
Treatment patients per week (minus new patients )	40 pts	30 pts	70	30 pts	100
Emergency patient testing (Quick testing turnaround)	4 pts	2 pts	6	N/A	6

#### Appendix 1:

Specialty guides for patient management during the coronavirus pandemic

Clinical guide for the management of cancer patients during the coronavirus pandemic

17 March 2020 Version 1

#### **Radiation therapy**

##### **Categorisation of patients**

###### *Priority level 1*

- Patients with category 1 (rapidly proliferating) tumours currently being treated with radical (chemo) radiotherapy with curative intent where there is little or no scope for compensation of gaps.
- Patients with category 1 tumours in whom combined External Beam Radiotherapy (EBRT) and subsequent brachytherapy is the management plan and the EBRT is already underway.
- Patients with category 1 tumours who have not yet started and in whom clinical need determines that treatment should start in line with current cancer waiting times.

###### *Priority level 2*

- Urgent palliative radiotherapy in patients with malignant spinal cord compression who have useful salvageable neurological function.

###### *Priority level 3*

- Radical radiotherapy for Category 2 (less aggressive) tumours where radiotherapy is the first definitive treatment.
- Post-operative radiotherapy where there is known residual disease following surgery in tumours with aggressive biology.

###### *Priority level 4*

- Palliative radiotherapy where alleviation of symptoms would reduce the burden on other healthcare services, such as haemoptysis.

###### *Priority level 5*

- Adjuvant radiotherapy where there has been complete resection of disease and there is a <20% risk of recurrence at 10 years, for example most ER positive breast cancer in patients receiving endocrine therapy.
- Radical radiotherapy for prostate cancer in patients receiving neo-adjuvant hormone therapy.