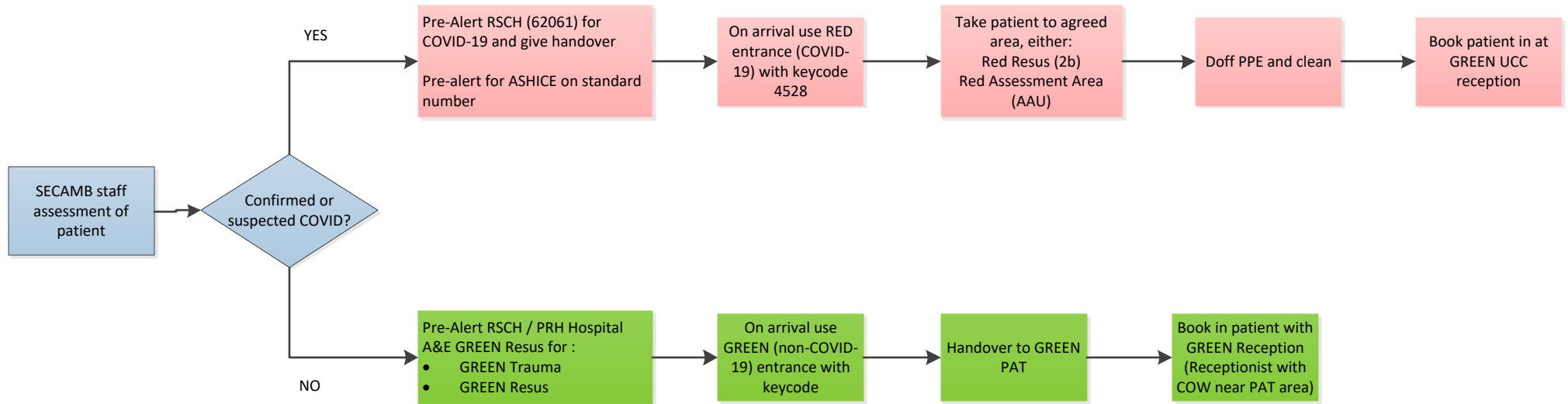
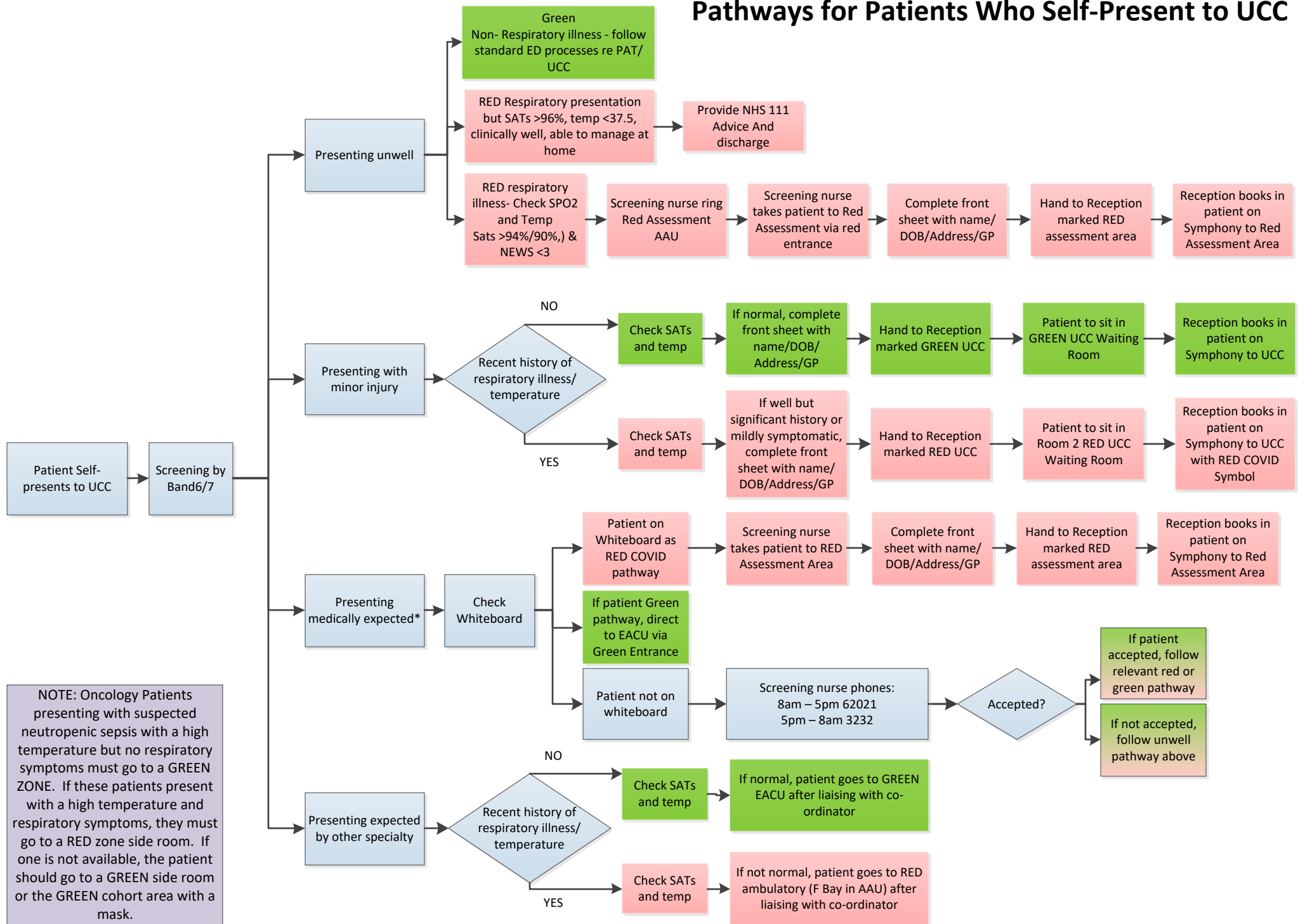


RSCH RED (COVID-19) and GREEN (Non-COVID-19) SECAMB Pathways (Including Medically Expected)



Pathways for Patients Who Self-Present to UCC



NOTE: Oncology Patients presenting with suspected neutropenic sepsis with a high temperature but no respiratory symptoms must go to a GREEN ZONE. If these patients present with a high temperature and respiratory symptoms, they must go to a RED zone side room. If one is not available, the patient should go to a GREEN side room or the GREEN cohort area with a mask.