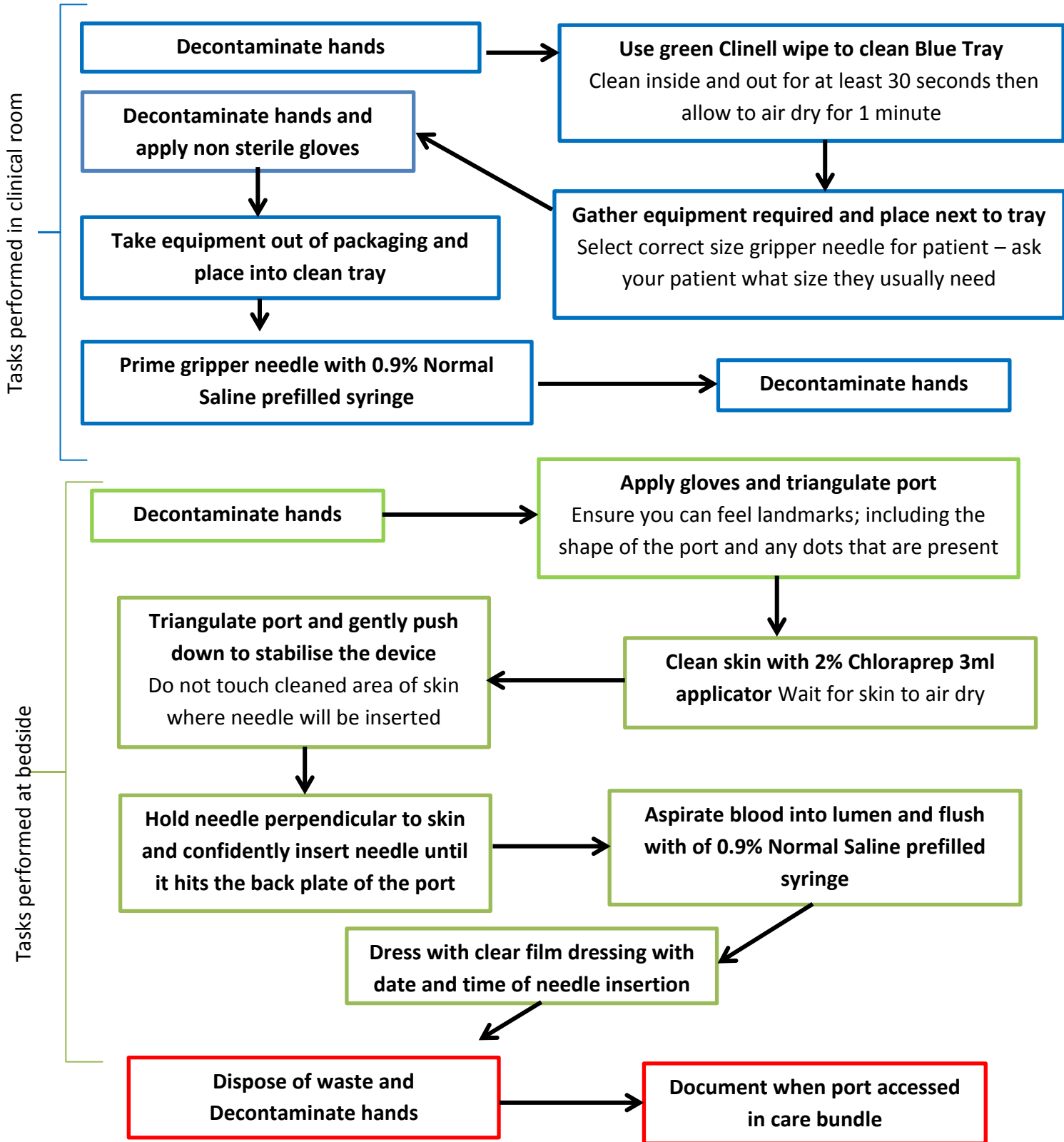


How to access a Portacath



If unable to aspirate ask patient to change position, lie flat or move arm

If the skin looks sore, red or inflamed from multiple needle insertions consider if the skin needs time to heal

Remember to check site for signs of infiltration, any stinging, swelling or redness

Remember that gripper needles need to be changed every 7 days

Position patient comfortably either sitting upright or lying flat