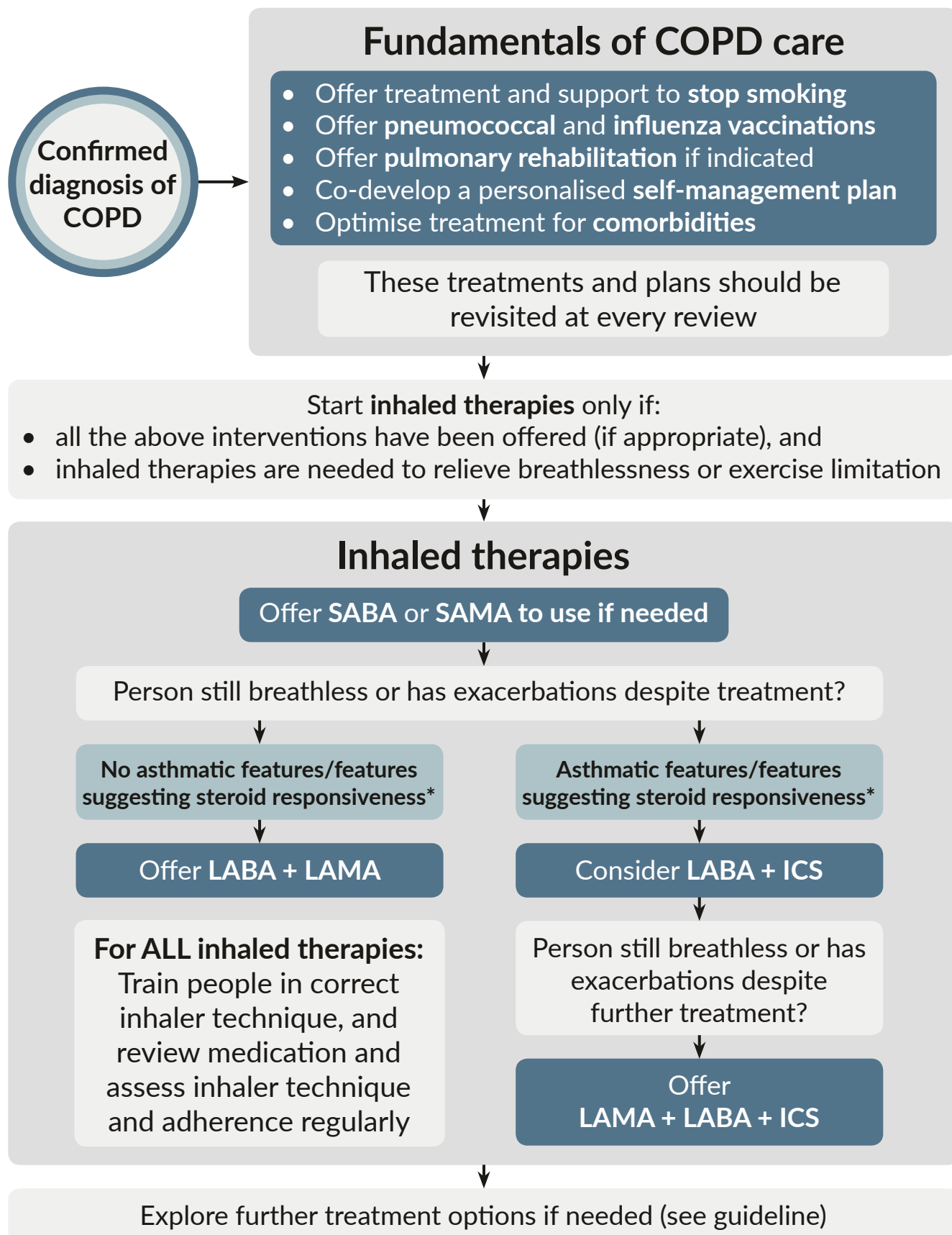


# Chronic obstructive pulmonary disease in over 16s: non-pharmacological management and use of inhaled therapies



\*Asthmatic features/features suggesting steroid responsiveness in this context include any previous secure diagnosis of asthma or atopy, a higher blood eosinophil count, substantial variation in FEV1 over time (at least 400 ml) or substantial diurnal variation in peak expiratory flow (at least 20%)

This is a summary of the recommendations on non-pharmacological management of chronic obstructive pulmonary disease and use of inhaled therapies in people over 16. The guideline also covers diagnosis and other areas of management. See [www.nice.org.uk/guidance/NG115](http://www.nice.org.uk/guidance/NG115)

© NICE 2018. All rights reserved. Subject to [Notice of rights](#).