

The Library and Knowledge Service has a number of ways to keep busy health care staff up to date with the steady flow of evidence. Below is a selected list of resources and services available for your use. For all resources see the Library and Knowledge Service website - www.bsuh.nhs.uk/library

To access most of the online resources listed you will need an ***OpenAthens account**. Register for your account at: <https://openathens.nice.org.uk>

**Note: access may be limited to specific organisations; contact uhsussex.library@nhs.net for advice.*

Journals

[Acta Ophthalmologica](#)

[American Journal of Ophthalmology](#)

[British Journal of Ophthalmology](#)

[Canadian Journal of Ophthalmology](#)

[Clinical and Experimental Ophthalmology](#)

[Cornea](#)

[JAMA Ophthalmology](#)

[Ophthalmology](#)

[Orbit](#)

[Survey of Ophthalmology](#)

Explore the full range at <https://journals.nice.org.uk/>

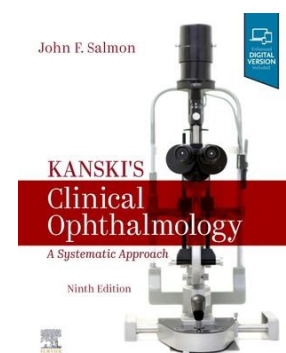
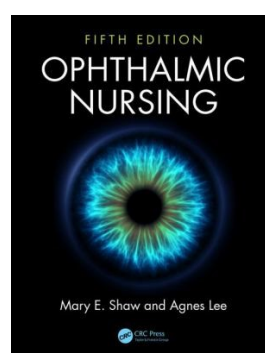
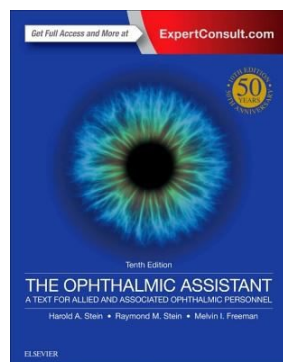
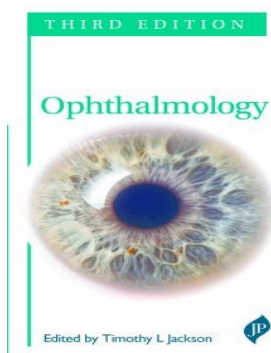
Books

Available in [print](#)

Available [online](#)

Available in [print](#)

Available in [online](#)



See the full collection at www.southeastlibrarysearch.nhs.uk

Clinical Images

ANATOMY.TV
POWERED BY PRIMAL PICTURES

[Anatomy.TV](#)

Anatomy and physiology online, including interactive 3D models and narrated animations.

Evidence-Based Clinical Summaries



[Best Practice](#) - regularly updated, this resource draws on the latest evidence-based research to offer step-by-step guidance on diagnosis, prognosis, treatment and prevention. [App available.](#)



[Cochrane Clinical Answers](#) - clinically focussed research from Cochrane Reviews. Each CCA contains a clinical Q&A with data on outcomes relevant to healthcare professionals and links to graphics.



[UpToDate Anywhere](#) - an evidence-based clinical decision support resource to support decisions at the point of care. Register for a personal account via [BSUH Intranet](#). [App available.](#)

Exam Preparation and Clinical Skills

We provide access to various online exam resources, including OnExamination and PassMedicine. Full details are on the Study for Exams page on our website.



You can also access evidence-based nursing procedures at [Clinicalskills.net](#) or [The Royal Marsden Manual](#)



**The Royal Marsden Manual of
Clinical Nursing Procedures**

Evidence Searching

We provide evidence to answer questions about patient care, service improvement, research and clinical teaching. Recent searches for Ophthalmology include:

- *Artificial Intelligence in diabetes and ophthalmology*
- *Human factors training in ophthalmology*
- *Simulation training in cataract surgery*
- *Non-thyroid autoimmune conditions and Graves ophthalmopathy*

To request a search, please fill in the [request an evidence search form](#) on the library website.

Information Skills Teaching

We offer a wide range of skills sessions to support evidence based healthcare.

For more information, see the [teaching](#) section on our website or contact uhsussex.library@nhs.net



Save yourself time and ensure you are up-to-date on the latest developments with KnowledgeShare, our award-winning current awareness service. It also links you with colleagues in other trusts to enable sharing of research and best practice on Ophthalmology.

Log in with your NHS OpenAthens account at www.knowledgeshare.nhs.uk or contact us on uhsussex.library@nhs.net for more information.

See information on all our resources at www.bsuh.nhs.uk/library