

Health Promotion Models

Alcohol & Substance Misuse

Beer goggles (Model)

Pair of goggles that give you blurred vision as if you've had one too many alcoholic drinks. Can be used in conjunction with the 'condom teaching model'. 5 pairs available to loan.



Boozed and confused night time beer goggles with case (Model)

Specifically designed to simulate the night time conditions that drunk drivers may face, the Boozed and Confused Night time Goggles are perfect for demonstrating how alcohol affects depth perception, reaction time, and coordination.



Death of a liver (Model)

Showing how alcohol abuse and other lifestyle choices can damage liver tissue to the extent that it's no longer recognizable, this trio of models helps alcohol users examine their "inner selves." 9" x 12"



D&Wp Drugs Box Version 3.6

24 drugs (harmless replicas) in this latest version, 3.6 have been reviewed, taking into account recent changes in UK government guidelines and drug culture. Durable and lockable flight case contains three trays in which there are 8 crystal cases containing the individual drug items. These crystal cases are removable and each tray slot and case are numbered and bear comprehensive details on appearance, how used, effects and what to look out for



The pickled liver (Model)

This plastic specimen jar contains a BIOLIKE 2 model of a cirrhotic liver floating beside a pickle. Irreverent humour makes the serious point that alcohol abuse can lead to cirrhosis, a leading cause of death.



What is a unit? alcohol replica display (Model)

The five 3-D models in this display are designed to help people understand how many units are in popular alcoholic drinks. The beer glass, wine glass, cocktail glass, whisky glass, and alcopop clearly demonstrate that the number of units can add up quickly. Each glass shows how much of the beverage constitutes one unit as well as how many total units are in the glass.



Cancer Prevention

Breastology bag (Model)

Six soft-sculpture breasts, which come in a handy tote bag, can be used to learn the basics of breast anatomy and how to feel for breast changes as well understand the differences between normal, fibrocystic, and harmful lumps. Instructions are printed on the back of each model.



Breast self examination model (Model)

Breast model contains palpable and non-palpable lumps that simulate easy- and hard-to-find breast tumours. Feels like actual breast tissue. Comes with slipcover and carrying case.

3 copies available to loan



Female pelvis cross section (Model)

Detailed and accurate, this educational model is a one-half scale representation of a midsagittal cross section of the pelvis. Shows an ovary and Fallopian tube as well as other parts of the female anatomy. Comes with base and key card.



Lung model (Model)

The stark differences between a normal lung and a lung reflecting the effects of COPD, cancer, and asthma are demonstrated by this full-sized cutaway model. Includes base and key card. 5 1/2" x 8 1/2" x 4 1/2".



Prostate model (Model)

This prostate model provides a cross section of the male genital organs showing a healthy prostate with bladder, urethra, testicle, symphysis and rectum. model.



Skin model (Model)

Explain cancerous (nodular basal cell, malignant melanoma, and morpheic basal cell) and non-cancerous skin conditions (dysplastic nevi, keratoacanthoma, and actinic keratosis) with this magnified model of the skin. Also features cross-sectional detail of basal and dermal layers. Comes with key card and base. Model is 4 1/2" x 1 1/2".



Testicle examination model (Model)

This life-size testicle model offers an extremely natural feel. By using SKINlike? (dermatologically tested), 3B's new high-quality silicon, learning and practicing self-examinations of the testicles becomes even more realistic. The scrotum contains two movable testicles, the epididymi and the spermatic cords for palpation. Two pathological findings can be felt in the left testicle. The front of the model also includes a replica of the beginning of the penis. 3 copies available to loan.



Uterus ovary model (Model)

Multiple pathologies-including adhesions, carcinomas, cysts, endometriosis,



General Anatomy/Diseases

Hypertension model (Model)

This set of miniature anatomical models demonstrates the parts of the body that can be damaged by hypertension. Includes brain, eye, heart, kidney, and artery models. Comes with stand and key card that describes how hypertension affects these organs.



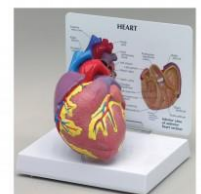
Eye model (Model)

Magnified eye model, many times larger than the human eye. This model separates into 2 hemispheres for easy viewing of all eye components. The inner view reveals the iris, cornea, lens, pupil and vitreous body. The exterior view focuses on the cornea, iris and pupil in addition to blood vessels, the optic nerve and muscles that provide eye movement.



Healthy heart model (Model)

One model features a partially healed infarction, another is plagued by congestive heart failure, and a normal model shows viewers what a heart is really supposed to look like.



Heart disease model (Model)

Three exceptionally detailed heart models offer a jolting look at the damage that is frequently the result of unhealthy living. One model features a partially healed infarction, another is plagued by congestive heart failure, and a normal model shows viewers what a heart is really supposed to look like. Each model is approx. 4" x 2 1/2" x 2 1/2".



Skull and brain model (Model)

This model demonstrates how vulnerable brains are to injury. Soft, realistic brain model fits inside this human skull model, which is dissectible into three parts.



Healthy Eating/Lifestyle

Fat chunk set (Model)

Made of BIOLIKE, these models realistically represent the look and feel of fat inside the body. A great way to remind people of the importance of exercise and a healthy diet. Each model comes with an informative tent card. The 1-lb (450-g) model is 19 cm x 9 cm. The 5-lb (about 2-kg) model is 30 cm x 17 cm. Use in conjunction with the mighty muscle set



Fat replica 1lb (Model)

A dramatic visual replica that visually portrays human body fat. Made of soft, pliable, long-lasting vinyl plastic, the replica has a profound, memorable effect when passed around the room. Replica represents the approximate volume of real fatty tissue; weight may vary. This replica represents the volume of a 1 lb. Does NOT weigh 1 lb.



Mighty muscle set (Model)

Made to represent the look and feel of a 1-lb (450-g) or 5-lb (2.3-kg) muscle cluster while flexed, these models graphically illustrate the benefits of exercise. The 1-lb (450-g) model is 9.5 cm x 9.5 cm. The 5-lb (2.3-kg) model is 12.7 cm x 20 cm.

Rolls of fat set 1lb and 5lb (Model)

Publication Information

These models have the look, feel, weight, and approximate volume of fat. Viewers can wrap these rolls around their waistlines for a demonstration of how fat accumulates. The 1-lb (450-g) roll is 30 cm x 8 cm x 3 cm. The 5-lb (2.3-kg) roll is 74 cm x 14 cm x 3 cm.



Vat of fat (Model)

Oral Health

Giant mouth dental care model with giant toothbrush (Model)

For teaching proper brushing and flossing techniques



Taking care of your teeth folding display (Model)

Colourful and fun, this three-panel folding display teaches young children the basics of dental care. Brushing, flossing, tooth-healthy snacks, and dental visits are covered in simple but educational terms. 110 cm x 57 cm opened



Sexual Health

Contraceptive display kit (Model)

The Contraceptive Display Kit is an ideal resource to encourage young people aged 12 and above to think and talk about contraception



D&Wp Safer Sex Box Version 2.1 (Model)

16 different methods of contraception and 8 Sexually Transmitted Infections (STIs) divided into three colour-coded trays



Female contraceptive model (Model)

This model can be used for the demonstration and practice of proper contraceptive insertion. A cutaway section exposing the upper end of the vaginal canal allows students to see how contraceptive devices are to be fitted over the cervix and so is also a useful aid for demonstrating where the cervix is.



Female pelvis cross section (Model)

Detailed and accurate, this educational model is a one-half scale representation of a midsagittal cross section of the pelvis. Shows an ovary and Fallopian tube as well as other parts of the female anatomy. Comes with base and key



Smoking

A year's worth of tar

This graphic, sealed exhibit contains a cigarette package and cigarette butts submerged in gooey 'tar'. It represents the amount of the carcinogenic liquid that smoking half a pack of cigarettes per day for 1 year would put through a person's lungs.



Chlem's phlegm (Model)

Graphically demonstrating one of the nasty consequences of smoking, this attention-getting sealed jar contains about 2 weeks of the phlegm that would be coughed up by a smoker with COPD. Great discussion starter for any tobacco lesson or programme. 10 cm x 15 cm.



What's in tobacco smoke? display (Model)

General Note: For use with adults and children in all health educational settings or mounted on the wall to create a talking point. Visual display representing some of the 4000 chemicals found in tobacco smoke. It contains a mix of



All models are available for loan to library members for 28 days at a time. Please check items are in stock before visiting us.

Brighton and Sussex NHS Library and Knowledge Service
Audrey Emerton Building - Royal Sussex County Hospital

For general library enquiries or to renew items:

Telephone: (01273) 523300 or RSCH x3300

Email: bsuh.library@nhs.net

Address:

The Library, Audrey Emerton Building, Royal Sussex County Hospital, Eastern Road, Brighton BN2 5BE